

IHC*easy* KISS1 Ready-To-Use IHC Kit

Catalog Number: **KHC2495**

General Information

Sample type:
FFPE tissue
Cited sample type:
Reactivity:
Human
Cited Reactivity:

Assay type:
Immunohistochemistry
Primary antibody type:
Rabbit Polyclonal
Secondary antibody type:
Polymer-HRP-Goat anti-Rabbit

Kit Component

Component	Size	Concentration
Antigen Retrieval Buffer	100 mL	50×
Washing Buffer	100 mL ×2	20×
Blocking Buffer	5 mL	RTU
Primary Antibody	5 mL	RTU
Secondary Antibody	5 mL	RTU
Chromogen Component A	0.2 mL	RTU
Chromogen Component B	4 mL	RTU
Signal Enhancer	5 mL	RTU
Counter Staining Reagent	5 mL	RTU
Mounting Media	5 mL	RTU
Control Slide	1 slide (Optional)	FFPE
Datasheet	1 Copy	
Manual	1 Copy	

Storage Instructions

All the reagents are stored at 2-8°C. The kit is stable for 6 months from the date of receipt.

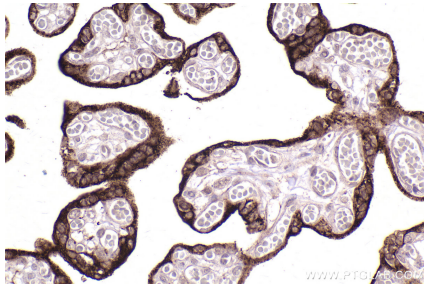
Background

KISS1, also known as kisspeptin, is a metastasis suppressor protein that suppresses metastases of human melanomas and breast carcinomas without affecting tumorigenicity. It may regulate events downstream of cell-matrix adhesion, perhaps involving cytoskeletal reorganization. A C-terminally amidated peptide of KISS1, metastin (kisspeptin-54 or kp-54), functions as the endogenous ligand of the G-protein coupled receptor GPR54. KISS1-GPR54 signaling is involved in the regulation of reproduction, playing an important role in initiating secretion of gonadotropin-releasing hormone (GnRH) at puberty.

Synonyms

KISS1, KiSS 1, KiSS 1 metastasis suppressor, Kisspept

Selected Validation Data



Immunohistochemical analysis of paraffin-embedded human placenta tissue slide using KHC2495 (KISS1 IHC Kit).