

IHC*easy* SKIV2L Ready-To-Use IHC Kit

Catalog Number: **KHC2490**

General Information

Sample type:
FFPE tissue
Cited sample type:
Reactivity:
Human, Mouse, Rat
Cited Reactivity:

Assay type:
Immunohistochemistry
Primary antibody type:
Rabbit Polyclonal
Secondary antibody type:
Polymer-HRP-Goat anti-Rabbit

Kit Component

Component	Size	Concentration
Antigen Retrieval Buffer	100 mL	50×
Washing Buffer	100 mL ×2	20×
Blocking Buffer	5 mL	RTU
Primary Antibody	5 mL	RTU
Secondary Antibody	5 mL	RTU
Chromogen Component A	0.2 mL	RTU
Chromogen Component B	4 mL	RTU
Signal Enhancer	5 mL	RTU
Counter Staining Reagent	5 mL	RTU
Mounting Media	5 mL	RTU
Control Slide	1 slide (Optional)	FFPE
Datasheet	1 Copy	
Manual	1 Copy	

Storage Instructions

All the reagents are stored at 2-8°C. The kit is stable for 6 months from the date of receipt.

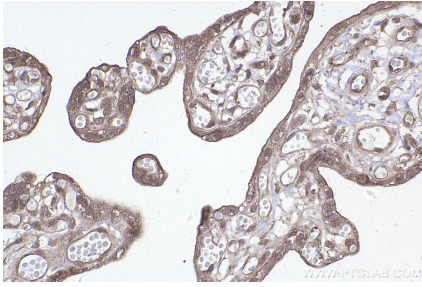
Background

The Ski complex is a multiprotein complex required for exosome-mediated RNA surveillance, including the regulation of normal mRNA and the decay of nonfunctional mRNA. Component of the SKI complex which is thought to be involved in exosome-mediated RNA decay and associates with transcriptionally active genes in a manner dependent on PAF1 complex (PAF1C). SKIV2L, one component of the Ski complex, acts as an RNA helicase with a role in exosome recruitment or activation. It is involved in the degradation of RNAs by the exosome and may have a role in autophagy.

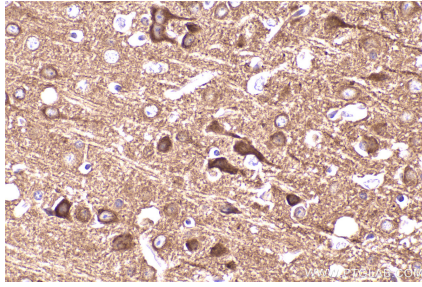
Synonyms

SKIV2L,170A,DDX13,EC:3.6.4.13,Helicase SKI2W

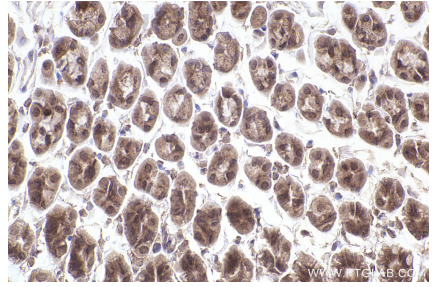
Selected Validation Data



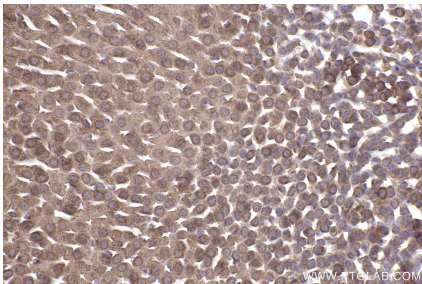
Immunohistochemical analysis of paraffin-embedded human placenta tissue slide using KHC2490 (SKIV2L IHC Kit).



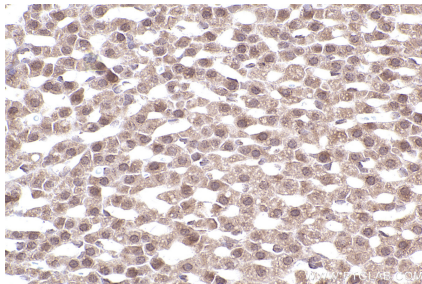
Immunohistochemical analysis of paraffin-embedded mouse brain tissue slide using KHC2490 (SKIV2L IHC Kit).



Immunohistochemical analysis of paraffin-embedded mouse stomach tissue slide using KHC2490 (SKIV2L IHC Kit).



Immunohistochemical analysis of paraffin-embedded mouse adrenal gland tissue slide using KHC2490 (SKIV2L IHC Kit).



Immunohistochemical analysis of paraffin-embedded rat adrenal gland tissue slide using KHC2490 (SKIV2L IHC Kit).