

# IHC*easy* PLEC Ready-To-Use IHC Kit

Catalog Number: **KHC2482**

## General Information

Sample type:  
FFPE tissue  
Cited sample type:  
Reactivity:  
Human, Mouse, Rat  
Cited Reactivity:

Assay type:  
Immunohistochemistry  
Primary antibody type:  
Rabbit Recombinant  
Secondary antibody type:  
Polymer-HRP-Goat anti-Rabbit

## Kit Component

Component	Size	Concentration
Antigen Retrieval Buffer	100 mL	50×
Washing Buffer	100 mL ×2	20×
Blocking Buffer	5 mL	RTU
Primary Antibody	5 mL	RTU
Secondary Antibody	5 mL	RTU
Chromogen Component A	0.2 mL	RTU
Chromogen Component B	4 mL	RTU
Signal Enhancer	5 mL	RTU
Counter Staining Reagent	5 mL	RTU
Mounting Media	5 mL	RTU
Control Slide	1 slide (Optional)	FFPE
Datasheet	1 Copy	
Manual	1 Copy	

## Storage Instructions

All the reagents are stored at 2-8°C. The kit is stable for 6 months from the date of receipt.

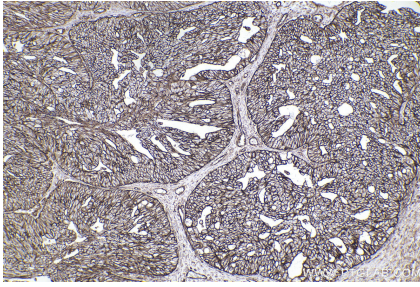
## Background

Plectin is a large (≥500-kDa) protein that is normally expressed in various tissues including skin, muscle, and brain. It binds to a number of cytoskeletal proteins including microtubules and intermediate filaments and is involved in establishment and dynamic modulation of the cytoskeletal network. In normal cells, it plays a crucial role in cytoskeleton network organization. In keratinocytes, plectin is concentrated at the basal surface, where it links intermediate filaments to the cytoplasmic domain of transmembrane glycoproteins such as integrin beta-4.

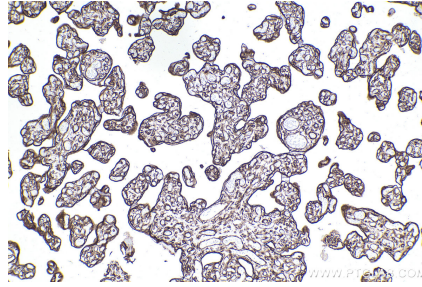
## Synonyms

PLEC1,Plectin,PLEC,PLEC1b,Plectin 1

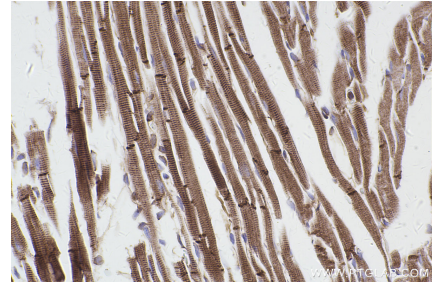
## Selected Validation Data



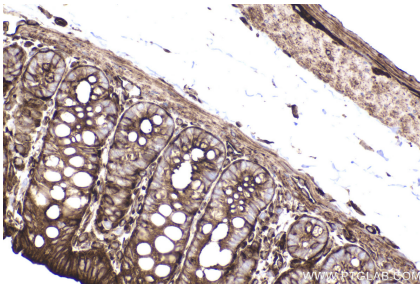
Immunohistochemical analysis of paraffin-embedded human ovary cancer tissue slide using KHC2482 (PLEC IHC Kit).



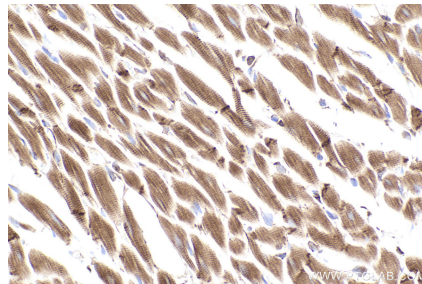
Immunohistochemical analysis of paraffin-embedded human placenta tissue slide using KHC2482 (PLEC IHC Kit).



Immunohistochemical analysis of paraffin-embedded mouse heart tissue slide using KHC2482 (PLEC IHC Kit).



Immunohistochemical analysis of paraffin-embedded rat colon tissue slide using KHC2482 (PLEC IHC Kit).



Immunohistochemical analysis of paraffin-embedded rat heart tissue slide using KHC2482 (PLEC IHC Kit).