

IHC*easy* NuMA Ready-To-Use IHC Kit

Catalog Number: **KHC2471**

General Information

Sample type:
FFPE tissue
Cited sample type:
Reactivity:
Human, Mouse, Rat
Cited Reactivity:

Assay type:
Immunohistochemistry
Primary antibody type:
Rabbit Polyclonal
Secondary antibody type:
Polymer-HRP-Goat anti-Rabbit

Kit Component

| Component | Size | Concentration |
|--------------------------|--------------------|---------------|
| Antigen Retrieval Buffer | 100 mL | 50× |
| Washing Buffer | 100 mL ×2 | 20× |
| Blocking Buffer | 5 mL | RTU |
| Primary Antibody | 5 mL | RTU |
| Secondary Antibody | 5 mL | RTU |
| Chromogen Component A | 0.2 mL | RTU |
| Chromogen Component B | 4 mL | RTU |
| Signal Enhancer | 5 mL | RTU |
| Counter Staining Reagent | 5 mL | RTU |
| Mounting Media | 5 mL | RTU |
| Control Slide | 1 slide (Optional) | FFPE |
| Datasheet | 1 Copy | |
| Manual | 1 Copy | |

Storage Instructions

All the reagents are stored at 2-8°C. The kit is stable for 6 months from the date of receipt.

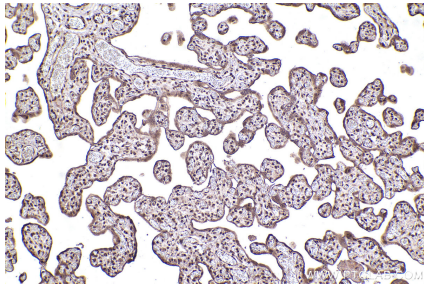
Background

NUMA1, also named as Nuclear matrix protein-22, is a 2115 amino acid protein, which forms multiarm oligomers by association of C-terminal tail domains. NUMA1 resides in the nuclear matrix during interphase. NUMA1 is a highly abundant component of the nuclear matrix where it may serve a non-mitotic structural role and occupies the majority of the nuclear volume. NUMA1 is required for maintenance and establishment of the mitotic spindle poles during symmetric cell divisions, functioning as a tether linking bulk microtubules of the spindle to centrosomes.

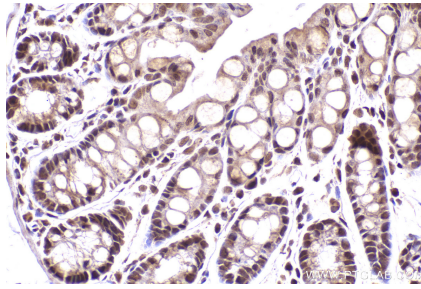
Synonyms

NUMA, NUMA1, NMP22, NMP-22, Nuclear matrix protein-22

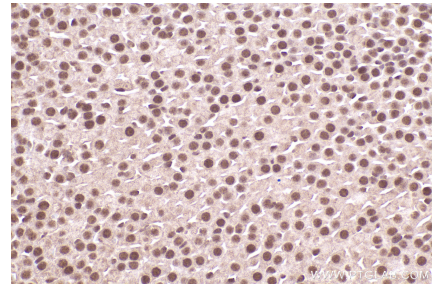
Selected Validation Data



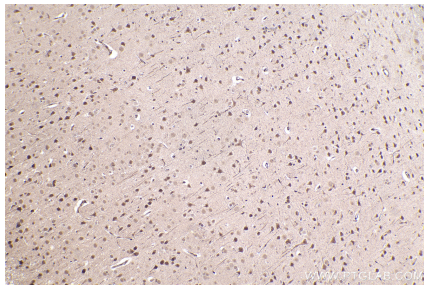
Immunohistochemical analysis of paraffin-embedded human placenta tissue slide using KHC2471 (NuMA IHC Kit).



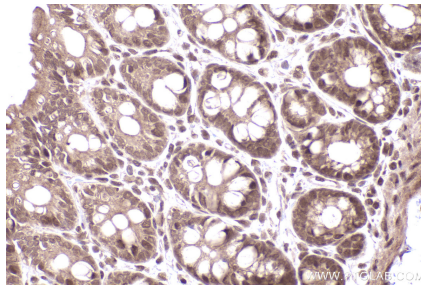
Immunohistochemical analysis of paraffin-embedded mouse colon tissue slide using KHC2471 (NuMA IHC Kit).



Immunohistochemical analysis of paraffin-embedded mouse adrenal gland tissue slide using KHC2471 (NuMA IHC Kit).



Immunohistochemical analysis of paraffin-embedded rat brain tissue slide using KHC2471 (NuMA IHC Kit).



Immunohistochemical analysis of paraffin-embedded rat colon tissue slide using KHC2471 (NuMA IHC Kit).