

IHC*easy* ZNF638 Ready-To-Use IHC Kit

Catalog Number: **KHC2470**

General Information

Sample type:
FFPE tissue
Cited sample type:
Reactivity:
Human, Mouse, Rat
Cited Reactivity:

Assay type:
Immunohistochemistry
Primary antibody type:
Rabbit Polyclonal
Secondary antibody type:
Polymer-HRP-Goat anti-Rabbit

Kit Component

Component	Size	Concentration
Antigen Retrieval Buffer	100 mL	50×
Washing Buffer	100 mL ×2	20×
Blocking Buffer	5 mL	RTU
Primary Antibody	5 mL	RTU
Secondary Antibody	5 mL	RTU
Chromogen Component A	0.2 mL	RTU
Chromogen Component B	4 mL	RTU
Signal Enhancer	5 mL	RTU
Counter Staining Reagent	5 mL	RTU
Mounting Media	5 mL	RTU
Control Slide	1 slide (Optional)	FFPE
Datasheet	1 Copy	
Manual	1 Copy	

Storage Instructions

All the reagents are stored at 2-8°C. The kit is stable for 6 months from the date of receipt.

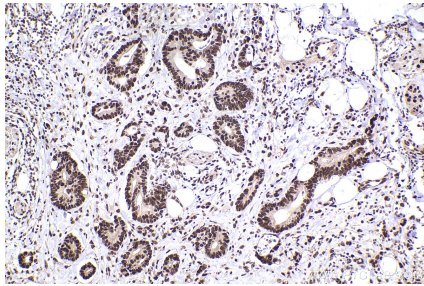
Background

ZNF638 (Zinc finger protein 638) is also named as NP220 and ZFML. ZNF638 is a newly discovered member of zinc finger protein family for adipocyte function in vitro. And ZNF638 regulates triglyceride metabolism via ANGPTL8 in an estrogen dependent manner. ZNF638 plays a role as a transcriptional coregulator of adipocyte differentiation via induction of PPAR γ in cooperation with CCAAT/enhancer binding proteins (C/EBPs). ZNF638 is localized in nuclear bodies enriched with splicing factors.

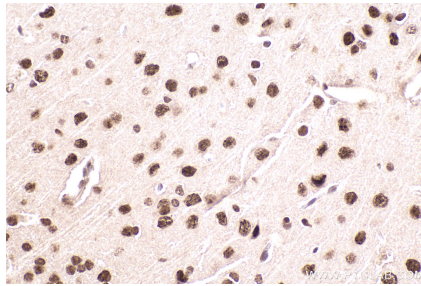
Synonyms

ZNF638,CTCL associated antigen se33 1,NP220,Nuclea

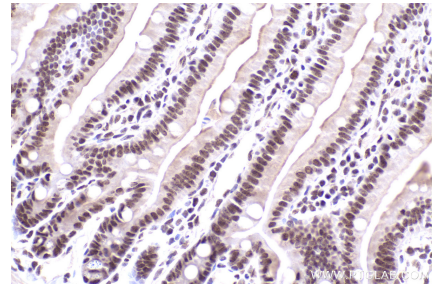
Selected Validation Data



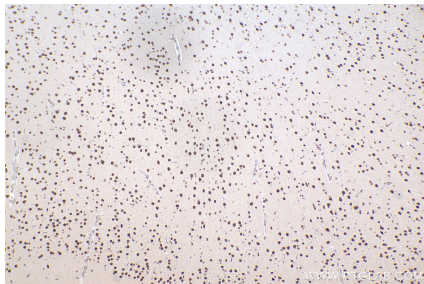
Immunohistochemical analysis of paraffin-embedded human rectal cancer tissue slide using KHC2470 (ZNF638 IHC Kit).



Immunohistochemical analysis of paraffin-embedded mouse brain tissue slide using KHC2470 (ZNF638 IHC Kit).



Immunohistochemical analysis of paraffin-embedded mouse small intestine tissue slide using KHC2470 (ZNF638 IHC Kit).



Immunohistochemical analysis of paraffin-embedded rat brain tissue slide using KHC2470 (ZNF638 IHC Kit).