

IHC*easy* FLOT2/Flotillin 2 Ready-To-Use IHC Kit

Catalog Number: **KHC2456**

General Information

Sample type:
FFPE tissue
Cited sample type:
Reactivity:
Human, Mouse
Cited Reactivity:

Assay type:
Immunohistochemistry
Primary antibody type:
Rabbit Polyclonal
Secondary antibody type:
Polymer-HRP-Goat anti-Rabbit

Kit Component

Component	Size	Concentration
Antigen Retrieval Buffer	100 mL	50×
Washing Buffer	100 mL ×2	20×
Blocking Buffer	5 mL	RTU
Primary Antibody	5 mL	RTU
Secondary Antibody	5 mL	RTU
Chromogen Component A	0.2 mL	RTU
Chromogen Component B	4 mL	RTU
Signal Enhancer	5 mL	RTU
Counter Staining Reagent	5 mL	RTU
Mounting Media	5 mL	RTU
Control Slide	1 slide (Optional)	FFPE
Datasheet	1 Copy	
Manual	1 Copy	

Storage Instructions

All the reagents are stored at 2-8°C. The kit is stable for 6 months from the date of receipt.

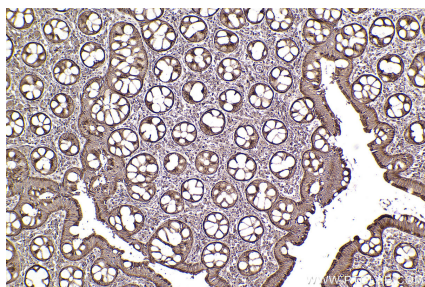
Background

Flotillins are membrane-associated proteins that contain two homologous isoforms, flotillin 1 (FLOT1) and flotillin 2 (FLOT2). They are highly conserved and widely expressed proteins that commonly used as markers of lipid rafts. Flotillins are involved in various signaling pathways, cell adhesion, membrane trafficking and axonal growth.

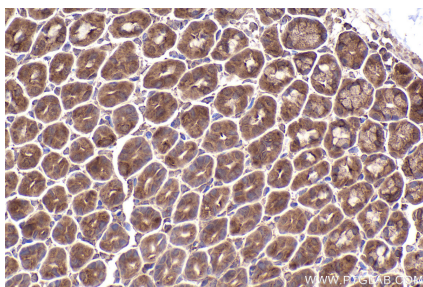
Synonyms

FLOT2, Flotillin 2, Flotillin-2, ECS 1, ECS1

Selected Validation Data



Immunohistochemical analysis of paraffin-embedded human rectal cancer tissue slide using KHC2456 (FLOT2/Flotillin 2 IHC Kit).



Immunohistochemical analysis of paraffin-embedded mouse stomach tissue slide using KHC2456 (FLOT2/Flotillin 2 IHC Kit).