

# IHCeasy<sup>®</sup> DYNC1H1 Ready-To-Use IHC Kit

Catalog Number: **KHC2455**

## General Information

Sample type:  
FFPE tissue  
Cited sample type:  
Reactivity:  
Human, Mouse, Rat  
Cited Reactivity:

Assay type:  
Immunohistochemistry  
Primary antibody type:  
Rabbit Polyclonal  
Secondary antibody type:  
Polymer-HRP-Goat anti-Rabbit

## Kit Component

Component	Size	Concentration
Antigen Retrieval Buffer	100 mL	50×
Washing Buffer	100 mL ×2	20×
Blocking Buffer	5 mL	RTU
Primary Antibody	5 mL	RTU
Secondary Antibody	5 mL	RTU
Chromogen Component A	0.2 mL	RTU
Chromogen Component B	4 mL	RTU
Signal Enhancer	5 mL	RTU
Counter Staining Reagent	5 mL	RTU
Mounting Media	5 mL	RTU
Control Slide	1 slide (Optional)	FFPE
Datasheet	1 Copy	
Manual	1 Copy	

## Storage Instructions

All the reagents are stored at 2-8°C. The kit is stable for 6 months from the date of receipt.

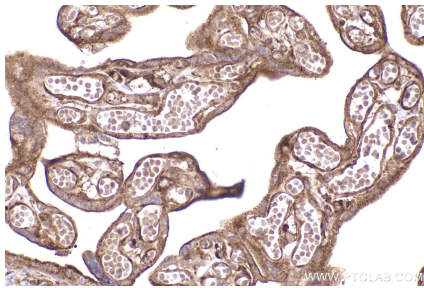
## Background

Dyneins are a group of microtubule-activated ATPases that serve to convert chemical energy into mechanical energy. It can be divided into 2 large subgroups, namely, the axonemal and cytoplasmic dyneins. The conventional cytoplasmic dynein are comprised of 2 heavy chain polypeptides and a number of intermediate and light chains. DYNC1H1 is a cytoplasmic dynein and belongs to the dynein heavy chain family. It acts as a motor for the intracellular retrograde motility of vesicles and organelles along microtubules. DYNC1H1 has been implicated in the degeneration of dopaminergic neuron axons and motor neurons in PD patients.

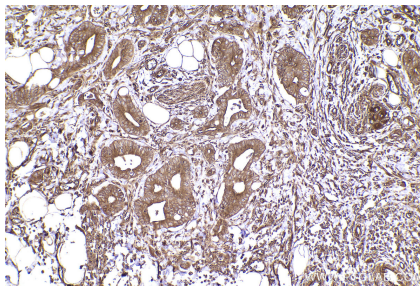
## Synonyms

DYNC1H1, DYNC1H 1

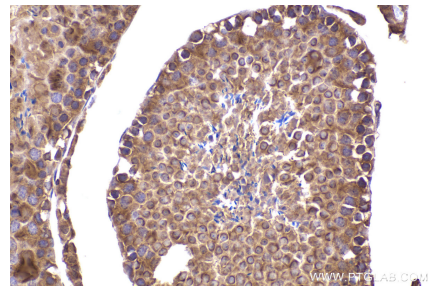
## Selected Validation Data



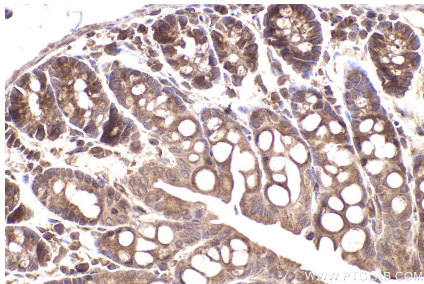
Immunohistochemical analysis of paraffin-embedded human placenta tissue slide using KHC2455 (DYNC1H1 IHC Kit).



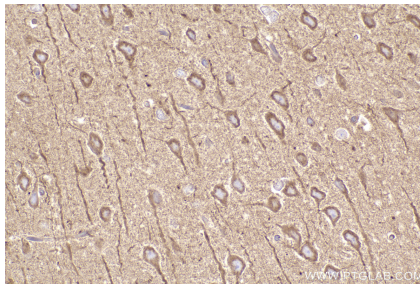
Immunohistochemical analysis of paraffin-embedded human rectal cancer tissue slide using KHC2455 (DYNC1H1 IHC Kit).



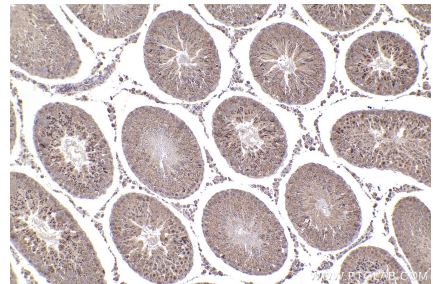
Immunohistochemical analysis of paraffin-embedded mouse testis tissue slide using KHC2455 (DYNC1H1 IHC Kit).



Immunohistochemical analysis of paraffin-embedded mouse colon tissue slide using KHC2455 (DYNC1H1 IHC Kit).



Immunohistochemical analysis of paraffin-embedded rat brain tissue slide using KHC2455 (DYNC1H1 IHC Kit).



Immunohistochemical analysis of paraffin-embedded rat testis tissue slide using KHC2455 (DYNC1H1 IHC Kit).