

# IHC*easy* BOP1 Ready-To-Use IHC Kit

Catalog Number: **KHC2447**

## General Information

Sample type:  
FFPE tissue  
Cited sample type:  
Reactivity:  
Human  
Cited Reactivity:

Assay type:  
Immunohistochemistry  
Primary antibody type:  
Rabbit Recombinant  
Secondary antibody type:  
Polymer-HRP-Goat anti-Rabbit

## Kit Component

Component	Size	Concentration
Antigen Retrieval Buffer	100 mL	50×
Washing Buffer	100 mL ×2	20×
Blocking Buffer	5 mL	RTU
Primary Antibody	5 mL	RTU
Secondary Antibody	5 mL	RTU
Chromogen Component A	0.2 mL	RTU
Chromogen Component B	4 mL	RTU
Signal Enhancer	5 mL	RTU
Counter Staining Reagent	5 mL	RTU
Mounting Media	5 mL	RTU
Control Slide	1 slide (Optional)	FFPE
Datasheet	1 Copy	
Manual	1 Copy	

## Storage Instructions

All the reagents are stored at 2-8°C. The kit is stable for 6 months from the date of receipt.

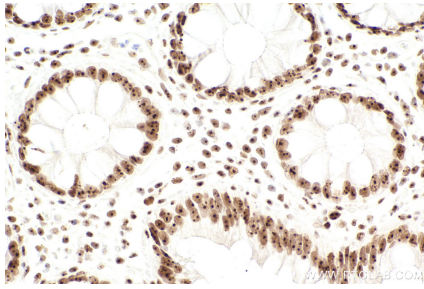
## Background

Block of Proliferation 1(BOP1) protein was first isolated from a mouse, and the truncation protein may led to cell cycle arrest. Bop1 plays a role in processing of the 28S and 5.8S rRNAs (ribosomal RNAs) to regulate ribosome biogenesis. And Bop1 also act as a component of Pes1/Bop1/WDR21 (PeBoW) complex for mature 60S ribosome, and consequently acts during cell division at G1 checkpoints. What's more, abnormal expression of BOP1 was associated with liver or colorectal cancers.

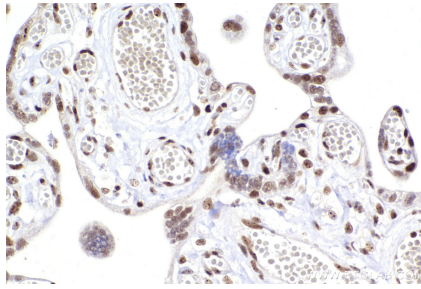
## Synonyms

BOP1,block of proliferation 1,KIAA0124

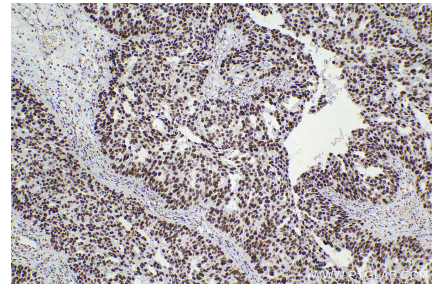
## Selected Validation Data



Immunohistochemical analysis of paraffin-embedded human rectal cancer tissue slide using KHC2447 (BOP1 IHC Kit).



Immunohistochemical analysis of paraffin-embedded human placenta tissue slide using KHC2447 (BOP1 IHC Kit).



Immunohistochemical analysis of paraffin-embedded human ovary cancer tissue slide using KHC2447 (BOP1 IHC Kit).