

# IHC*easy* TRIM29 Ready-To-Use IHC Kit

Catalog Number: **KHC2446**

## General Information

Sample type:  
FFPE tissue  
Cited sample type:  
Reactivity:  
Human, Mouse, Rat  
Cited Reactivity:

Assay type:  
Immunohistochemistry  
Primary antibody type:  
Rabbit Polyclonal  
Secondary antibody type:  
Polymer-HRP-Goat anti-Rabbit

## Kit Component

Component	Size	Concentration
Antigen Retrieval Buffer	100 mL	50×
Washing Buffer	100 mL ×2	20×
Blocking Buffer	5 mL	RTU
Primary Antibody	5 mL	RTU
Secondary Antibody	5 mL	RTU
Chromogen Component A	0.2 mL	RTU
Chromogen Component B	4 mL	RTU
Signal Enhancer	5 mL	RTU
Counter Staining Reagent	5 mL	RTU
Mounting Media	5 mL	RTU
Control Slide	1 slide (Optional)	FFPE
Datasheet	1 Copy	
Manual	1 Copy	

## Storage Instructions

All the reagents are stored at 2-8°C. The kit is stable for 6 months from the date of receipt.

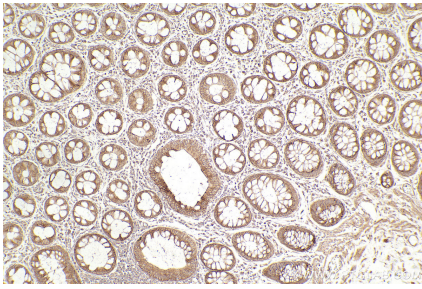
## Background

TRIM29(Tripartite motif-containing protein 29) is also named as ATDC( Ataxia telangiectasia group D-associated protein). ATDC protein physically interacted with the intermediate filament protein vimentin, a protein kinase C substrate and colocalizing protein, and with an inhibitor of protein kinase C, PKC11. ATDC gene is highly expressed in samples of primary pancreatic cancer and PanIN lesions compared to normal pancreas and chronic pancreatitis and the highly expressed protein in human pancreatic cancer,enhances cancer cell proliferation and in vivo tumorigenicity by upregulation of the Wnt/b-Catenin signaling pathway.

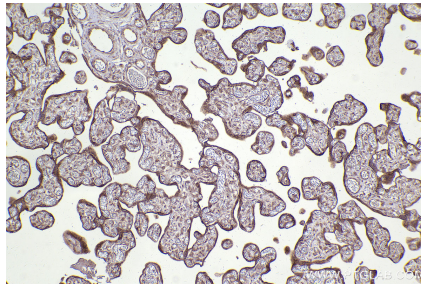
## Synonyms

TRIM29,Ataxia telangiectasia group D-associated pr

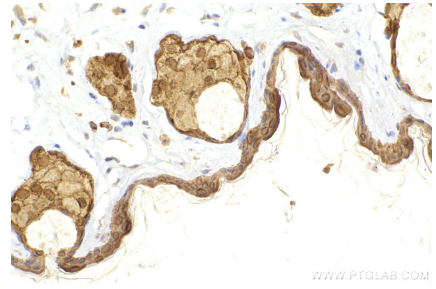
## Selected Validation Data



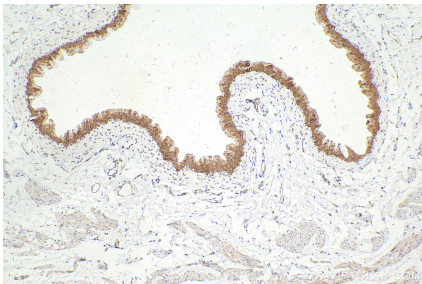
Immunohistochemical analysis of paraffin-embedded human rectal cancer tissue slide using KHC2446 (TRIM29 IHC Kit).



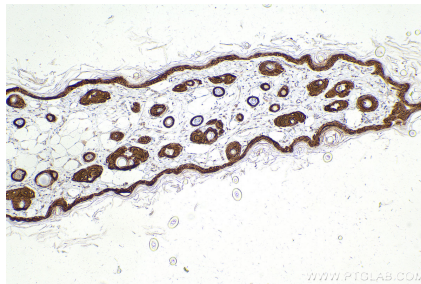
Immunohistochemical analysis of paraffin-embedded human placenta tissue slide using KHC2446 (TRIM29 IHC Kit).



Immunohistochemical analysis of paraffin-embedded mouse skin tissue slide using KHC2446 (TRIM29 IHC Kit).



Immunohistochemical analysis of paraffin-embedded rat bladder tissue slide using KHC2446 (TRIM29 IHC Kit).



Immunohistochemical analysis of paraffin-embedded rat skin tissue slide using KHC2446 (TRIM29 IHC Kit).