

# IHC*easy* EIF2B5 Ready-To-Use IHC Kit

Catalog Number: **KHC2418**

## General Information

Sample type:  
FFPE tissue  
Cited sample type:  
Reactivity:  
Human, Rat  
Cited Reactivity:

Assay type:  
Immunohistochemistry  
Primary antibody type:  
Rabbit Polyclonal  
Secondary antibody type:  
Polymer-HRP-Goat anti-Rabbit

## Kit Component

Component	Size	Concentration
Antigen Retrieval Buffer	100 mL	50×
Washing Buffer	100 mL ×2	20×
Blocking Buffer	5 mL	RTU
Primary Antibody	5 mL	RTU
Secondary Antibody	5 mL	RTU
Chromogen Component A	0.2 mL	RTU
Chromogen Component B	4 mL	RTU
Signal Enhancer	5 mL	RTU
Counter Staining Reagent	5 mL	RTU
Mounting Media	5 mL	RTU
Control Slide	1 slide (Optional)	FFPE
Datasheet	1 Copy	
Manual	1 Copy	

## Storage Instructions

All the reagents are stored at 2-8°C. The kit is stable for 6 months from the date of receipt.

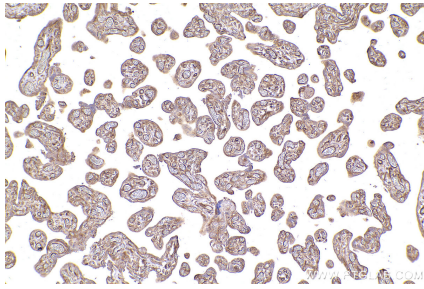
## Background

EIF2B5 encodes translation initiation factor eIF-2B subunit epsilon protein. EIF2B5 mutations compromise the induction of GFAP-expressing astrocytes in VWM (vanishing white matter) leukodystrophy. The upregulation of EIF2B5 is associated with cancer such as human pulmonary adenocarcinoma cell and breast cancer.

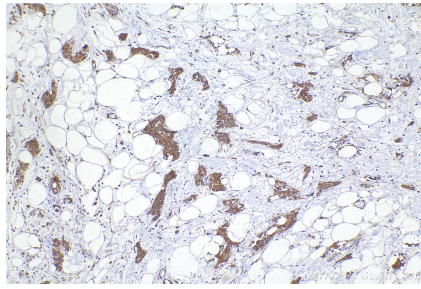
## Synonyms

EIF2B5,CACH,CLE,eIF 2B,eIF2BE

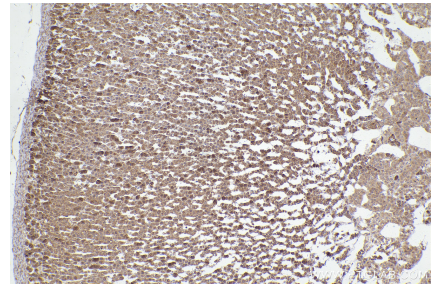
## Selected Validation Data



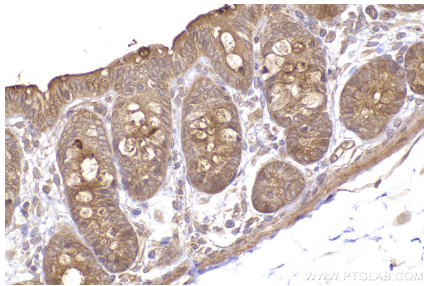
Immunohistochemical analysis of paraffin-embedded human placenta tissue slide using KHC2418 (EIF2B5 IHC Kit).



Immunohistochemical analysis of paraffin-embedded human urothelial carcinoma tissue slide using KHC2418 (EIF2B5 IHC Kit).



Immunohistochemical analysis of paraffin-embedded rat adrenal gland tissue slide using KHC2418 (EIF2B5 IHC Kit).



Immunohistochemical analysis of paraffin-embedded rat colon tissue slide using KHC2418 (EIF2B5 IHC Kit).