

# IHC*easy*TAP2 Ready-To-Use IHC Kit

Catalog Number: **KHC2391**

## General Information

Sample type:  
FFPE tissue  
Cited sample type:  
Reactivity:  
Human, Rat  
Cited Reactivity:

Assay type:  
Immunohistochemistry  
Primary antibody type:  
Rabbit Polyclonal  
Secondary antibody type:  
Polymer-HRP-Goat anti-Rabbit

## Kit Component

Component	Size	Concentration
Antigen Retrieval Buffer	100 mL	50×
Washing Buffer	100 mL ×2	20×
Blocking Buffer	5 mL	RTU
Primary Antibody	5 mL	RTU
Secondary Antibody	5 mL	RTU
Chromogen Component A	0.2 mL	RTU
Chromogen Component B	4 mL	RTU
Signal Enhancer	5 mL	RTU
Counter Staining Reagent	5 mL	RTU
Mounting Media	5 mL	RTU
Control Slide	1 slide (Optional)	FFPE
Datasheet	1 Copy	
Manual	1 Copy	

## Storage Instructions

All the reagents are stored at 2-8°C. The kit is stable for 6 months from the date of receipt.

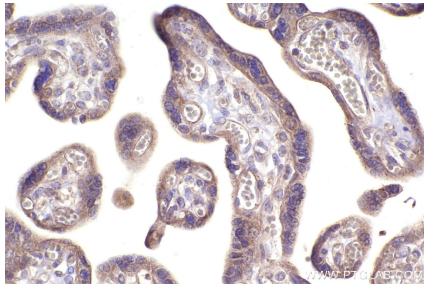
## Background

TAP2, also known as APT2, ABCB3, is a member of the superfamily of ATP-binding cassette (ABC) transporters. TAP2 mediates unidirectional translocation of peptide antigens from cytosol to endoplasmic reticulum (ER) for loading onto MHC class I (MHCI) molecules. Mutations in TAP2 may be associated with Bare lymphocyte syndrome 1 (BLS1) and schizophrenia.

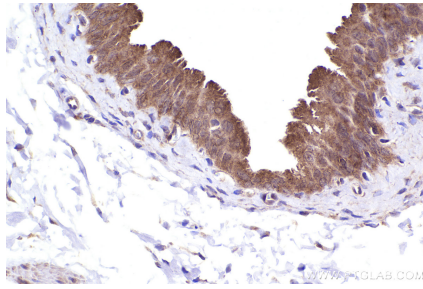
## Synonyms

PSF-2, PSF2, EC:7.4.2.14, ATP-binding cassette sub-family B member 3, APT2

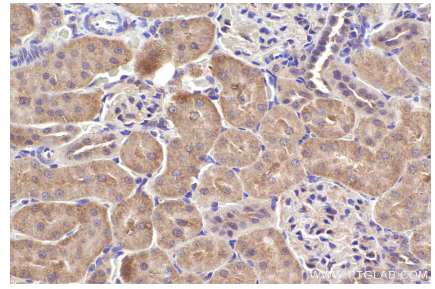
## Selected Validation Data



Immunohistochemical analysis of paraffin-embedded human placenta tissue slide using KHC2391 (TAP2 IHC Kit).



Immunohistochemical analysis of paraffin-embedded rat bladder tissue slide using KHC2391 (TAP2 IHC Kit).



Immunohistochemical analysis of paraffin-embedded rat kidney tissue slide using KHC2391 (TAP2 IHC Kit).