

IHC*easy* PFKP Ready-To-Use IHC Kit

Catalog Number: **KHC2385**

General Information

Sample type:
FFPE tissue
Cited sample type:
Reactivity:
Human, Mouse, Rat
Cited Reactivity:

Assay type:
Immunohistochemistry
Primary antibody type:
Rabbit Polyclonal
Secondary antibody type:
Polymer-HRP-Goat anti-Rabbit

Kit Component

Component	Size	Concentration
Antigen Retrieval Buffer	100 mL	50×
Washing Buffer	100 mL ×2	20×
Blocking Buffer	5 mL	RTU
Primary Antibody	5 mL	RTU
Secondary Antibody	5 mL	RTU
Chromogen Component A	0.2 mL	RTU
Chromogen Component B	4 mL	RTU
Signal Enhancer	5 mL	RTU
Counter Staining Reagent	5 mL	RTU
Mounting Media	5 mL	RTU
Control Slide	1 slide (Optional)	FFPE
Datasheet	1 Copy	
Manual	1 Copy	

Storage Instructions

All the reagents are stored at 2-8°C. The kit is stable for 6 months from the date of receipt.

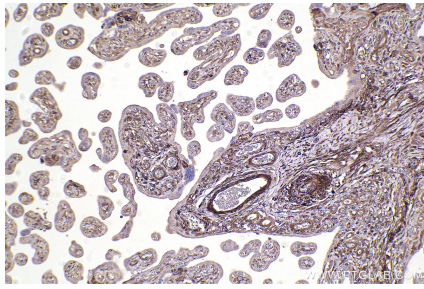
Background

PFKP(6-phosphofructokinase, platelet type) is also named as PFKF, PFK-C and belongs to the phosphofructokinase family. This form of PFK is best called the 'platelet' type and symbolized PFKP because it is the only form made by platelets, whereas fibroblasts have more than one form of PFK (Francke (1983)). PFK catalyzes the irreversible conversion of fructose-6-phosphate to fructose-1,6-bisphosphate and is a key regulatory enzyme in glycolysis.

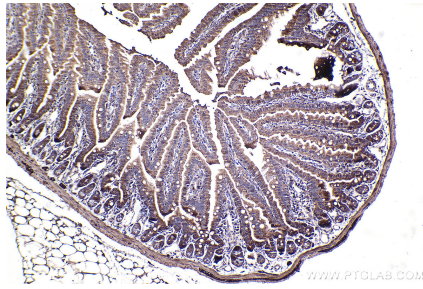
Synonyms

PFKF, PFK-C, EC:2.7.1.11, ATP-PFK, ATP-dependent 6-phosphofructokinase, platelet type

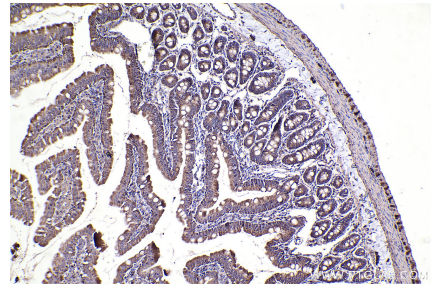
Selected Validation Data



Immunohistochemical analysis of paraffin-embedded human placenta tissue slide using KHC2385 (PFKP IHC Kit).



Immunohistochemical analysis of paraffin-embedded mouse small intestine tissue slide using KHC2385 (PFKP IHC Kit).



Immunohistochemical analysis of paraffin-embedded rat small intestine tissue slide using KHC2385 (PFKP IHC Kit).