

IHC*easy* BORG5/CDC42EP1 Ready-To-Use IHC Kit

Catalog Number: **KHC2381**

General Information

Sample type:
FFPE tissue
Cited sample type:
Reactivity:
Human, Mouse, Rat
Cited Reactivity:

Assay type:
Immunohistochemistry
Primary antibody type:
Rabbit Polyclonal
Secondary antibody type:
Polymer-HRP-Goat anti-Rabbit

Kit Component

Component	Size	Concentration
Antigen Retrieval Buffer	100 mL	50×
Washing Buffer	100 mL ×2	20×
Blocking Buffer	5 mL	RTU
Primary Antibody	5 mL	RTU
Secondary Antibody	5 mL	RTU
Chromogen Component A	0.2 mL	RTU
Chromogen Component B	4 mL	RTU
Signal Enhancer	5 mL	RTU
Counter Staining Reagent	5 mL	RTU
Mounting Media	5 mL	RTU
Control Slide	1 slide (Optional)	FFPE
Datasheet	1 Copy	
Manual	1 Copy	

Storage Instructions

All the reagents are stored at 2-8°C. The kit is stable for 6 months from the date of receipt.

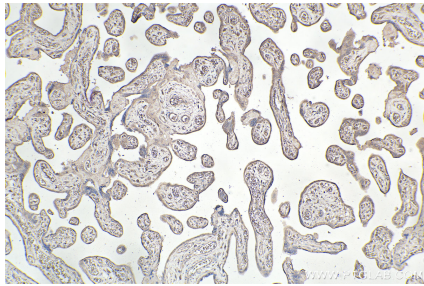
Background

CDC42EP1, also known as BORG5, is a CDC42 binding protein that mediates actin cytoskeleton reorganization at the plasma membrane. This protein is secreted and is primarily found in bone marrow.

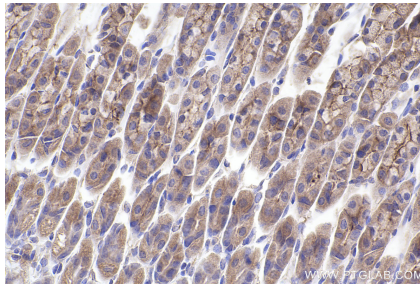
Synonyms

BORG5, CDC42EP1, MSE55, CEP1, Cdc42 effector protein 1

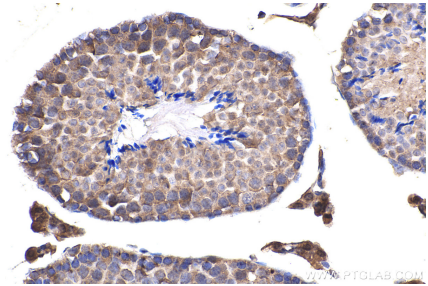
Selected Validation Data



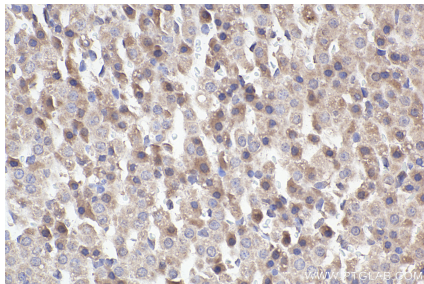
Immunohistochemical analysis of paraffin-embedded human placenta tissue slide using KHC2381 (BORG5/CDC42EP1 IHC Kit).



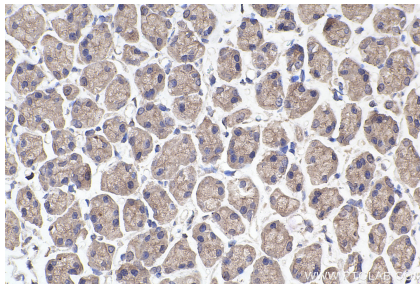
Immunohistochemical analysis of paraffin-embedded mouse stomach tissue slide using KHC2381 (BORG5/CDC42EP1 IHC Kit).



Immunohistochemical analysis of paraffin-embedded mouse testis tissue slide using KHC2381 (BORG5/CDC42EP1 IHC Kit).



Immunohistochemical analysis of paraffin-embedded rat adrenal gland tissue slide using KHC2381 (BORG5/CDC42EP1 IHC Kit).



Immunohistochemical analysis of paraffin-embedded rat stomach tissue slide using KHC2381 (BORG5/CDC42EP1 IHC Kit).