

IHC*easy* ATP2C1 Ready-To-Use IHC Kit

Catalog Number: **KHC2379**

General Information

Sample type:
FFPE tissue
Cited sample type:
Reactivity:
Human, Mouse, Rat
Cited Reactivity:

Assay type:
Immunohistochemistry
Primary antibody type:
Rabbit Polyclonal
Secondary antibody type:
Polymer-HRP-Goat anti-Rabbit

Kit Component

Component	Size	Concentration
Antigen Retrieval Buffer	100 mL	50×
Washing Buffer	100 mL ×2	20×
Blocking Buffer	5 mL	RTU
Primary Antibody	5 mL	RTU
Secondary Antibody	5 mL	RTU
Chromogen Component A	0.2 mL	RTU
Chromogen Component B	4 mL	RTU
Signal Enhancer	5 mL	RTU
Counter Staining Reagent	5 mL	RTU
Mounting Media	5 mL	RTU
Control Slide	1 slide (Optional)	FFPE
Datasheet	1 Copy	
Manual	1 Copy	

Storage Instructions

All the reagents are stored at 2-8°C. The kit is stable for 6 months from the date of receipt.

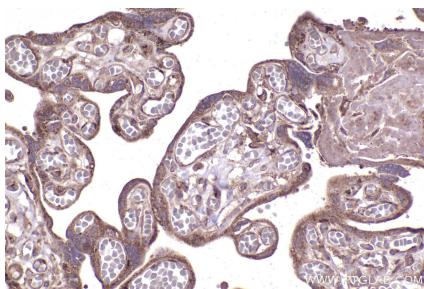
Background

ATP2C1, also known as hSPCA1, belongs to the family of P-type cation transport ATPases. ATP2C1 is a Golgi-localized ATPase that mediates Golgi uptake of cytosolic Ca(2+) and Mg(2+) and has a role in regulating Ca(2+) and Mn(2+) cellular content. ATP2C1 is found in most tissues except colon, thymus, spleen, and leukocytes. It is expressed in keratinocytes. Defects in ATP2C1 cause Hailey-Hailey disease (HHD).

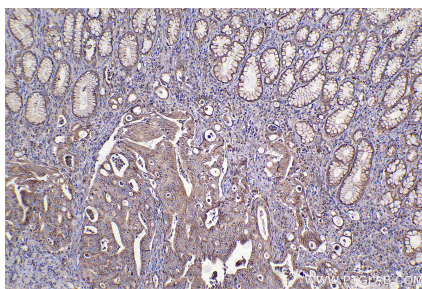
Synonyms

PMR1, HUSSY-28, hSPCA1, EC:7.2.2.10, Calcium-transporting ATPase type 2C member 1

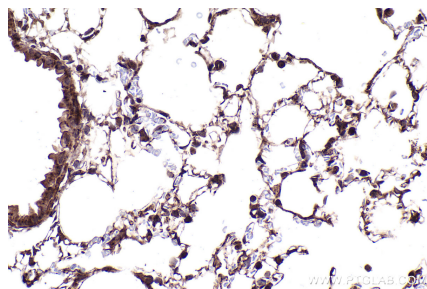
Selected Validation Data



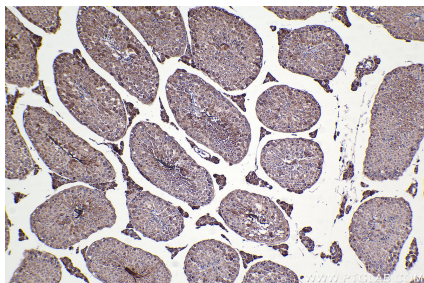
Immunohistochemical analysis of paraffin-embedded human placenta tissue slide using KHC2379 (ATP2C1 IHC Kit).



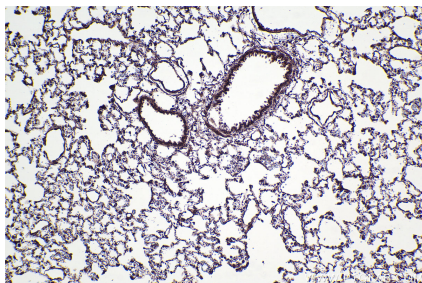
Immunohistochemical analysis of paraffin-embedded human stomach cancer tissue slide using KHC2379 (ATP2C1 IHC Kit).



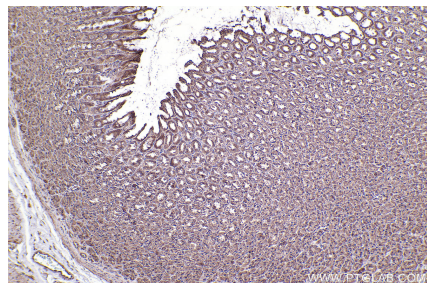
Immunohistochemical analysis of paraffin-embedded mouse lung tissue slide using KHC2379 (ATP2C1 IHC Kit).



Immunohistochemical analysis of paraffin-embedded mouse testis tissue slide using KHC2379 (ATP2C1 IHC Kit).



Immunohistochemical analysis of paraffin-embedded rat lung tissue slide using KHC2379 (ATP2C1 IHC Kit).



Immunohistochemical analysis of paraffin-embedded rat stomach tissue slide using KHC2379 (ATP2C1 IHC Kit).