

IHC*easy* PRR5 Ready-To-Use IHC Kit

Catalog Number: **KHC2375**

General Information

Sample type:
FFPE tissue
Cited sample type:
Reactivity:
Human
Cited Reactivity:

Assay type:
Immunohistochemistry
Primary antibody type:
Rabbit Polyclonal
Secondary antibody type:
Polymer-HRP-Goat anti-Rabbit

Kit Component

Component	Size	Concentration
Antigen Retrieval Buffer	100 mL	50×
Washing Buffer	100 mL ×2	20×
Blocking Buffer	5 mL	RTU
Primary Antibody	5 mL	RTU
Secondary Antibody	5 mL	RTU
Chromogen Component A	0.2 mL	RTU
Chromogen Component B	4 mL	RTU
Signal Enhancer	5 mL	RTU
Counter Staining Reagent	5 mL	RTU
Mounting Media	5 mL	RTU
Control Slide	1 slide (Optional)	FFPE
Datasheet	1 Copy	
Manual	1 Copy	

Storage Instructions

All the reagents are stored at 2-8°C. The kit is stable for 6 months from the date of receipt.

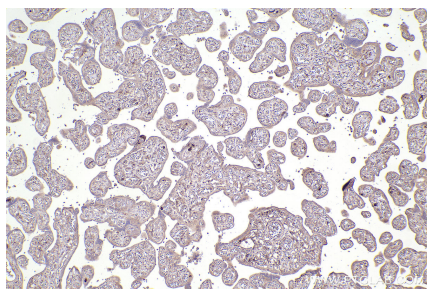
Background

PRR5, also named as PROTOR1 and PP610, is a subunit of mTORC2, which regulates cell growth and survival in response to hormonal signals. PRR5 plays an important role in regulation of PDGFRB expression and in modulation of platelet-derived growth factor signaling. It acts as a tumor suppressor in breast cancer.

Synonyms

Proline-rich protein 5, Proline rich protein 5, proline rich 5 (renal), PP610, FLJ20185k

Selected Validation Data



Immunohistochemical analysis of paraffin-embedded human placenta tissue slide using KHC2375 (PRR5 IHC Kit).