

IHC*easy* ADARB1 Ready-To-Use IHC Kit

Catalog Number: **KHC2368**

General Information

Sample type:
FFPE tissue
Cited sample type:
Reactivity:
Human, Mouse, Rat
Cited Reactivity:

Assay type:
Immunohistochemistry
Primary antibody type:
Rabbit Polyclonal
Secondary antibody type:
Polymer-HRP-Goat anti-Rabbit

Kit Component

Component	Size	Concentration
Antigen Retrieval Buffer	100 mL	50×
Washing Buffer	100 mL ×2	20×
Blocking Buffer	5 mL	RTU
Primary Antibody	5 mL	RTU
Secondary Antibody	5 mL	RTU
Chromogen Component A	0.2 mL	RTU
Chromogen Component B	4 mL	RTU
Signal Enhancer	5 mL	RTU
Counter Staining Reagent	5 mL	RTU
Mounting Media	5 mL	RTU
Control Slide	1 slide (Optional)	FFPE
Datasheet	1 Copy	
Manual	1 Copy	

Storage Instructions

All the reagents are stored at 2-8°C. The kit is stable for 6 months from the date of receipt.

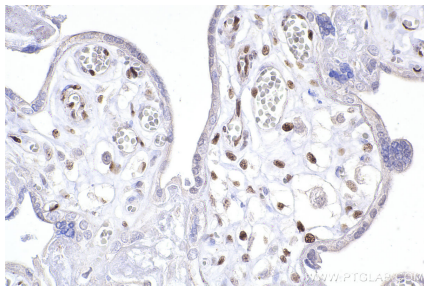
Background

ADARB1(Double-stranded RNA-specific editase 1) is also named as ADAR2, DRADA2, RED1 and belongs to the ADAR family. It catalyses the deamination of adenosine to inosine at the GluR2 Q/R site in the pre-mRNA encoding the critical subunit of AMPA receptors.

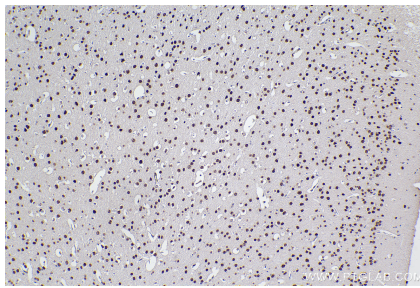
Synonyms

RED1, ADAR2, RNA-editing deaminase 1, EC:3.5.4.37, Double-stranded RNA-specific editase 1

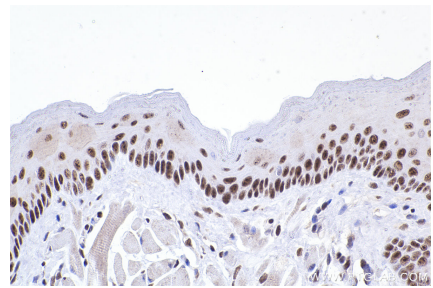
Selected Validation Data



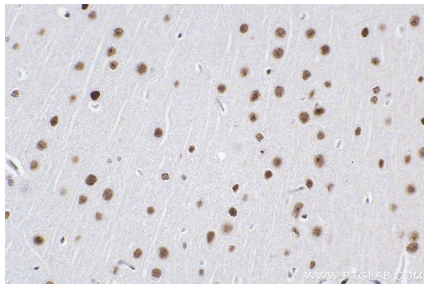
Immunohistochemical analysis of paraffin-embedded human placenta tissue slide using KHC2368 (ADARB1 IHC Kit).



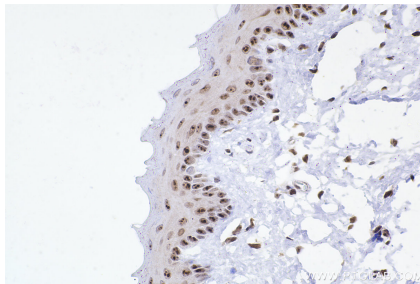
Immunohistochemical analysis of paraffin-embedded mouse brain tissue slide using KHC2368 (ADARB1 IHC Kit).



Immunohistochemical analysis of paraffin-embedded mouse tongue tissue slide using KHC2368 (ADARB1 IHC Kit).



Immunohistochemical analysis of paraffin-embedded rat brain tissue slide using KHC2368 (ADARB1 IHC Kit).



Immunohistochemical analysis of paraffin-embedded rat tongue tissue slide using KHC2368 (ADARB1 IHC Kit).