

IHC*easy* RAC1 Ready-To-Use IHC Kit

Catalog Number: **KHC2356**

General Information

Sample type:
FFPE tissue
Cited sample type:
Reactivity:
Human, Mouse, Rat
Cited Reactivity:

Assay type:
Immunohistochemistry
Primary antibody type:
Mouse Monoclonal
Secondary antibody type:
Polymer-HRP-Goat anti-Mouse

Kit Component

Component	Size	Concentration
Antigen Retrieval Buffer	100 mL	50×
Washing Buffer	100 mL ×2	20×
Blocking Buffer	5 mL	RTU
Primary Antibody	5 mL	RTU
Secondary Antibody	5 mL	RTU
Chromogen Component A	0.2 mL	RTU
Chromogen Component B	4 mL	RTU
Signal Enhancer	5 mL	RTU
Counter Staining Reagent	5 mL	RTU
Mounting Media	5 mL	RTU
Control Slide	1 slide (Optional)	FFPE
Datasheet	1 Copy	
Manual	1 Copy	

Storage Instructions

All the reagents are stored at 2-8°C. The kit is stable for 6 months from the date of receipt.

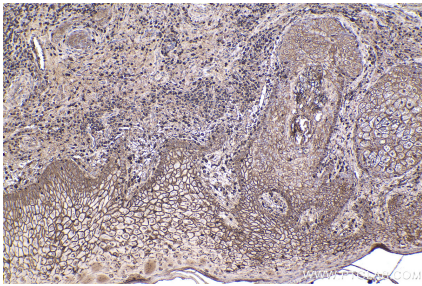
Background

RAC1b, also named as TC25, belongs to the small GTPase superfamily and Rho family. RAC1 is a plasma membrane-associated small GTPase which cycles between active GTP-bound and inactive GDP-bound states. In its active state, it binds to a variety of effector proteins to regulate cellular responses such as secretory processes, phagocytosis of apoptotic cells, epithelial cell polarization and growth-factor induced formation of membrane ruffles.

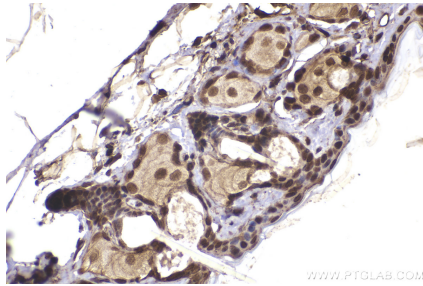
Synonyms

MIG5, Ras like protein TC25, p21-Rac1, p21 Rac1, EC:3.6.5.2

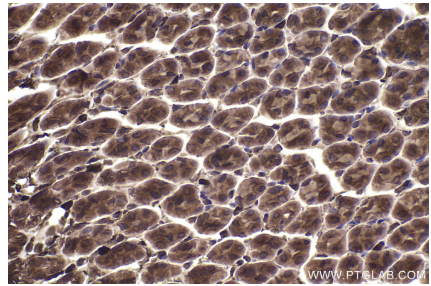
Selected Validation Data



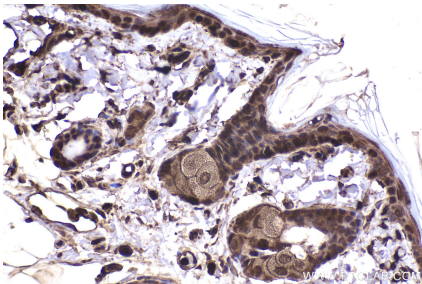
Immunohistochemical analysis of paraffin-embedded human skin cancer tissue slide using KHC2356 (RAC1 IHC Kit).



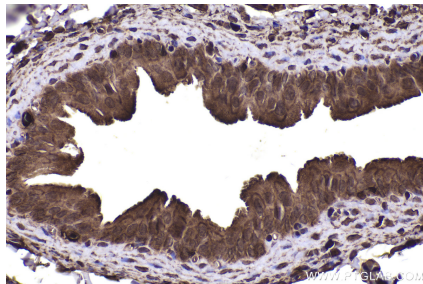
Immunohistochemical analysis of paraffin-embedded mouse skin tissue slide using KHC2356 (RAC1 IHC Kit).



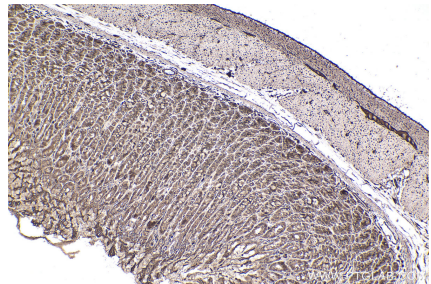
Immunohistochemical analysis of paraffin-embedded mouse stomach tissue slide using KHC2356 (RAC1 IHC Kit).



Immunohistochemical analysis of paraffin-embedded rat skin tissue slide using KHC2356 (RAC1 IHC Kit).



Immunohistochemical analysis of paraffin-embedded rat bladder tissue slide using KHC2356 (RAC1 IHC Kit).



Immunohistochemical analysis of paraffin-embedded rat stomach tissue slide using KHC2356 (RAC1 IHC Kit).