

# IHC*easy* ANTXR2 Ready-To-Use IHC Kit

Catalog Number: **KHC2333**

## General Information

Sample type:  
FFPE tissue  
Cited sample type:  
Reactivity:  
Human, Mouse, Rat  
Cited Reactivity:

Assay type:  
Immunohistochemistry  
Primary antibody type:  
Rabbit Polyclonal  
Secondary antibody type:  
Polymer-HRP-Goat anti-Rabbit

## Kit Component

Component	Size	Concentration
Antigen Retrieval Buffer	100 mL	50×
Washing Buffer	100 mL ×2	20×
Blocking Buffer	5 mL	RTU
Primary Antibody	5 mL	RTU
Secondary Antibody	5 mL	RTU
Chromogen Component A	0.2 mL	RTU
Chromogen Component B	4 mL	RTU
Signal Enhancer	5 mL	RTU
Counter Staining Reagent	5 mL	RTU
Mounting Media	5 mL	RTU
Control Slide	1 slide (Optional)	FFPE
Datasheet	1 Copy	
Manual	1 Copy	

## Storage Instructions

All the reagents are stored at 2-8°C. The kit is stable for 6 months from the date of receipt.

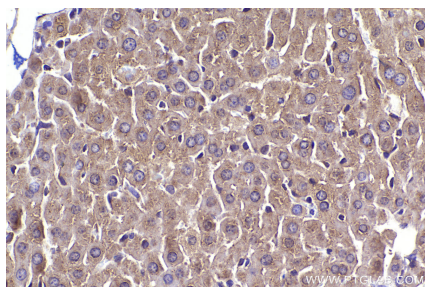
## Background

ANTXR2 (anthrax toxin receptor 2), also known as CMG2 (capillary morphogenesis gene 2 protein) is a transmembrane protein that is induced during capillary morphogenesis. It contains a vWA domain that shows strong binding to laminin and collagen IV, suggesting that this protein plays a role in basement membrane matrix assembly and endothelial cell morphogenesis. Like its paralog TEM8 (ANTXR1), ANT XR2 also functions as a receptor for anthrax toxin. Mutations in ANT XR2 result in the allelic disorders juvenile hyaline fibromatosis and infantile systemic hyalinosis.

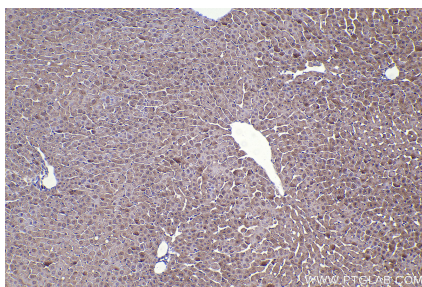
## Synonyms

JHF, ISH, CMG-2, CMG2, CMG 2

## Selected Validation Data



Immunohistochemical analysis of paraffin-embedded mouse liver tissue slide using KHC2333 (ANTXR2 IHC Kit).



Immunohistochemical analysis of paraffin-embedded rat liver tissue slide using KHC2333 (ANTXR2 IHC Kit).