

# IHC*easy* GSDMD Ready-To-Use IHC Kit

Catalog Number: **KHC2332**

## General Information

Sample type:  
FFPE tissue  
Cited sample type:  
Reactivity:  
Human, Mouse, Rat  
Cited Reactivity:

Assay type:  
Immunohistochemistry  
Primary antibody type:  
Rabbit Polyclonal  
Secondary antibody type:  
Polymer-HRP-Goat anti-Rabbit

## Kit Component

Component	Size	Concentration
Antigen Retrieval Buffer	100 mL	50×
Washing Buffer	100 mL ×2	20×
Blocking Buffer	5 mL	RTU
Primary Antibody	5 mL	RTU
Secondary Antibody	5 mL	RTU
Chromogen Component A	0.2 mL	RTU
Chromogen Component B	4 mL	RTU
Signal Enhancer	5 mL	RTU
Counter Staining Reagent	5 mL	RTU
Mounting Media	5 mL	RTU
Control Slide	1 slide (Optional)	FFPE
Datasheet	1 Copy	
Manual	1 Copy	

## Storage Instructions

All the reagents are stored at 2-8°C. The kit is stable for 6 months from the date of receipt.

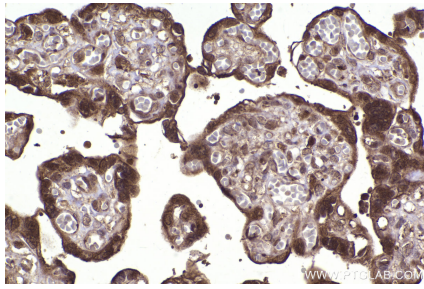
## Background

GSDMD is a member of the gasdermin family. Members of this family appear to play a role in regulation of epithelial proliferation. GSDMD has been suggested to act as a tumor suppressor. Recently, GSDMD is identified as a new component of inflammasomes, and it is an executor of pyroptosis and required for interleukin-1 $\beta$  secretion. Cleavage of GSDMD by inflammatory caspases determines pyroptotic cell death.

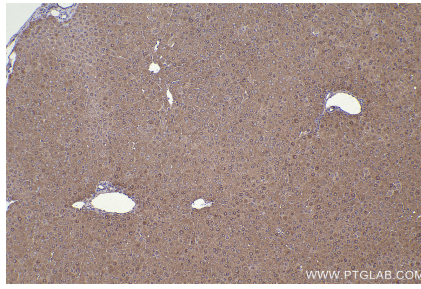
## Synonyms

Gasdermin-D, C-terminal, Gasdermin-D, gasderminD, Gasdermin domain-containing protein 1, gasdermin D

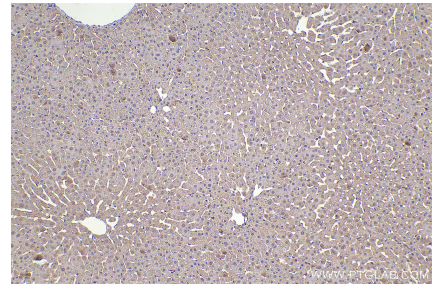
## Selected Validation Data



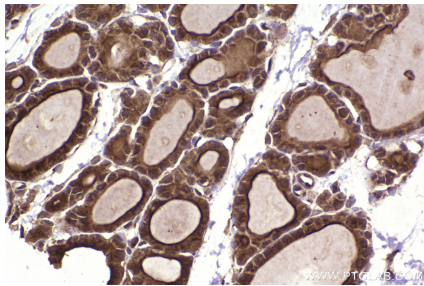
Immunohistochemical analysis of paraffin-embedded human placenta tissue slide using KHC2332 (GSDMD IHC Kit).



Immunohistochemical analysis of paraffin-embedded mouse liver tissue slide using KHC2332 (GSDMD IHC Kit).



Immunohistochemical analysis of paraffin-embedded rat liver tissue slide using KHC2332 (GSDMD IHC Kit).



Immunohistochemical analysis of paraffin-embedded rat thyroid gland tissue slide using KHC2332 (GSDMD IHC Kit).