

IHC*easy* NUDT6 Ready-To-Use IHC Kit

Catalog Number: **KHC2314**

General Information

Sample type:
FFPE tissue
Cited sample type:
Reactivity:
Human, Mouse, Rat
Cited Reactivity:

Assay type:
Immunohistochemistry
Primary antibody type:
Rabbit Polyclonal
Secondary antibody type:
Polymer-HRP-Goat anti-Rabbit

Kit Component

Component	Size	Concentration
Antigen Retrieval Buffer	100 mL	50×
Washing Buffer	100 mL ×2	20×
Blocking Buffer	5 mL	RTU
Primary Antibody	5 mL	RTU
Secondary Antibody	5 mL	RTU
Chromogen Component A	0.2 mL	RTU
Chromogen Component B	4 mL	RTU
Signal Enhancer	5 mL	RTU
Counter Staining Reagent	5 mL	RTU
Mounting Media	5 mL	RTU
Control Slide	1 slide (Optional)	FFPE
Datasheet	1 Copy	
Manual	1 Copy	

Storage Instructions

All the reagents are stored at 2-8°C. The kit is stable for 6 months from the date of receipt.

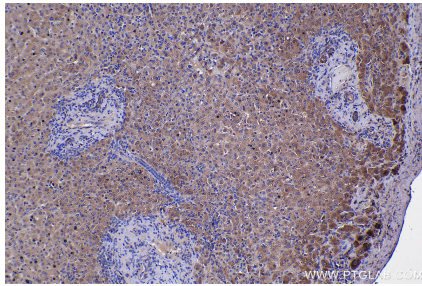
Background

NUDT6, also named as FGF2AS and GFG, belongs to the Nudix hydrolase family. It may contribute to the regulation of cell proliferation. NUDT6 maybe a candidate gene for fat deposition.

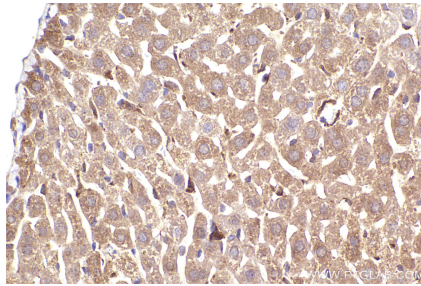
Synonyms

gfg, FGF2AS, FGF AS, FGF 2, EC:3.6.1.-

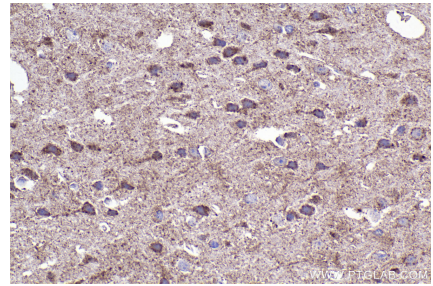
Selected Validation Data



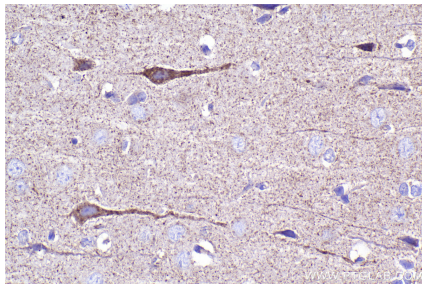
Immunohistochemical analysis of paraffin-embedded human liver tissue slide using KHC2314 (NUDT6 IHC Kit).



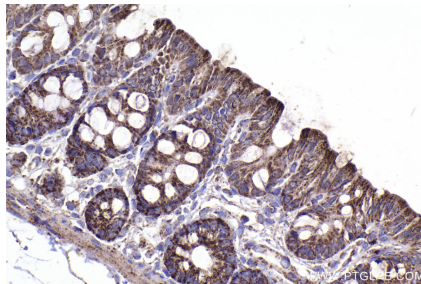
Immunohistochemical analysis of paraffin-embedded mouse liver tissue slide using KHC2314 (NUDT6 IHC Kit).



Immunohistochemical analysis of paraffin-embedded mouse brain tissue slide using KHC2314 (NUDT6 IHC Kit).



Immunohistochemical analysis of paraffin-embedded rat brain tissue slide using KHC2314 (NUDT6 IHC Kit).



Immunohistochemical analysis of paraffin-embedded rat colon tissue slide using KHC2314 (NUDT6 IHC Kit).