

# IHC*easy* SEPHS1 Ready-To-Use IHC Kit

Catalog Number: **KHC2293**

## General Information

**Sample type:**  
FFPE tissue

**Cited sample type:**

**Reactivity:**  
Human, Mouse, Rat

**Cited Reactivity:**

**Assay type:**  
Immunohistochemistry

**Primary antibody type:**  
Rabbit Polyclonal

**Secondary antibody type:**  
Polymer-HRP-Goat anti-Rabbit

## Kit Component

Component	Size	Concentration
Antigen Retrieval Buffer	100 mL	50×
Washing Buffer	100 mL ×2	20×
Blocking Buffer	5 mL	RTU
Primary Antibody	5 mL	RTU
Secondary Antibody	5 mL	RTU
Chromogen Component A	0.2 mL	RTU
Chromogen Component B	4 mL	RTU
Signal Enhancer	5 mL	RTU
Counter Staining Reagent	5 mL	RTU
Mounting Media	5 mL	RTU
Control Slide	1 slide (Optional)	FFPE
Datasheet	1 Copy	
Manual	1 Copy	

## Storage Instructions

All the reagents are stored at 2-8°C. The kit is stable for 6 months from the date of receipt.

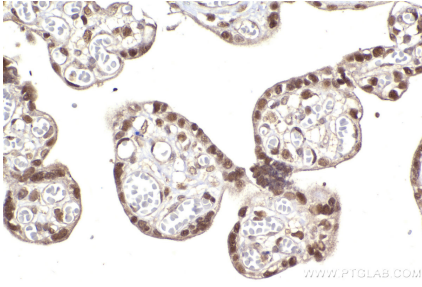
## Background

Selenophosphate synthetase 1 (SEPHS1) has been implicated in the maintenance of redox homeostasis in chondrocytes and its deficiency plays a causal role in the progression of osteoarthritis. SEPHS1 downregulation in human umbilical vein cells (HUVECs) led to cell death rather than the inhibition of cell proliferation.

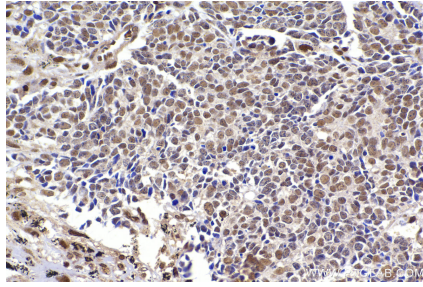
## Synonyms

selenophosphate synthetase 1, Selenophosphate synthase 1, Selenium donor protein 1, Selenide, water dikinase 1, SELD

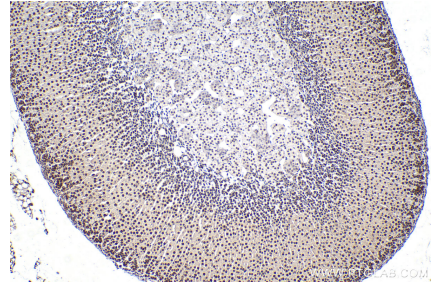
## Selected Validation Data



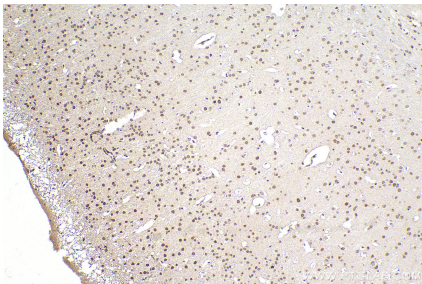
Immunohistochemical analysis of paraffin-embedded human placenta tissue slide using KHC2293 (SEPHS1 IHC Kit).



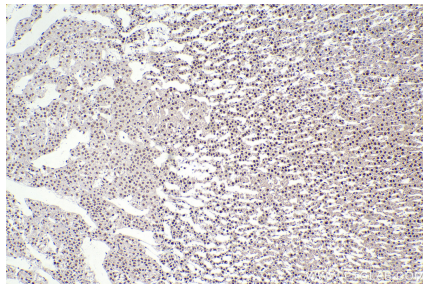
Immunohistochemical analysis of paraffin-embedded human lung cancer tissue slide using KHC2293 (SEPHS1 IHC Kit).



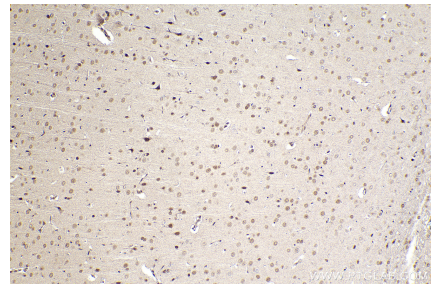
Immunohistochemical analysis of paraffin-embedded mouse adrenal gland tissue slide using KHC2293 (SEPHS1 IHC Kit).



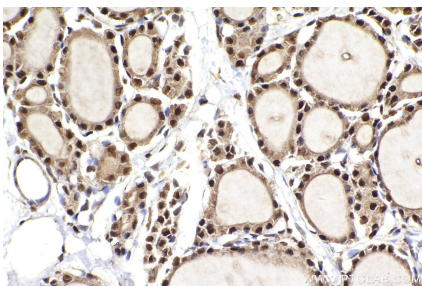
Immunohistochemical analysis of paraffin-embedded mouse brain tissue slide using KHC2293 (SEPHS1 IHC Kit).



Immunohistochemical analysis of paraffin-embedded rat adrenal gland tissue slide using KHC2293 (SEPHS1 IHC Kit).



Immunohistochemical analysis of paraffin-embedded rat brain tissue slide using KHC2293 (SEPHS1 IHC Kit).



Immunohistochemical analysis of paraffin-embedded rat thyroid gland tissue slide using KHC2293 (SEPHS1 IHC Kit).