

# IHC*easy* GSK3A Ready-To-Use IHC Kit

Catalog Number: **KHC2292**

## General Information

Sample type:  
FFPE tissue  
Cited sample type:  
Reactivity:  
Human, Mouse, Rat  
Cited Reactivity:

Assay type:  
Immunohistochemistry  
Primary antibody type:  
Rabbit Polyclonal  
Secondary antibody type:  
Polymer-HRP-Goat anti-Rabbit

## Kit Component

Component	Size	Concentration
Antigen Retrieval Buffer	100 mL	50×
Washing Buffer	100 mL ×2	20×
Blocking Buffer	5 mL	RTU
Primary Antibody	5 mL	RTU
Secondary Antibody	5 mL	RTU
Chromogen Component A	0.2 mL	RTU
Chromogen Component B	4 mL	RTU
Signal Enhancer	5 mL	RTU
Counter Staining Reagent	5 mL	RTU
Mounting Media	5 mL	RTU
Control Slide	1 slide (Optional)	FFPE
Datasheet	1 Copy	
Manual	1 Copy	

## Storage Instructions

All the reagents are stored at 2-8°C. The kit is stable for 6 months from the date of receipt.

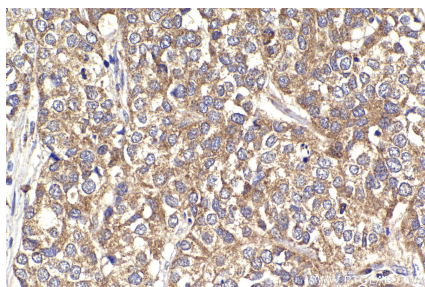
## Background

GSK3A (glycogen synthase kinase 3 alpha), one of the two functional isoforms encoded by the GSK3 gene, is a serine/threonine protein kinase that is involved in cell-cycle progression, differentiation, and apoptosis. GSK3A acts as a tumor suppressor and has important roles in acute myeloid leukemia (AML), prostate cancer, and pancreatic cancer. GSK3A is also known to interact with beta-amyloid and tau, proteins that aggregate in areas of the neuronal system as part of the pathology of neurodegenerative diseases such as Alzheimer's disease.

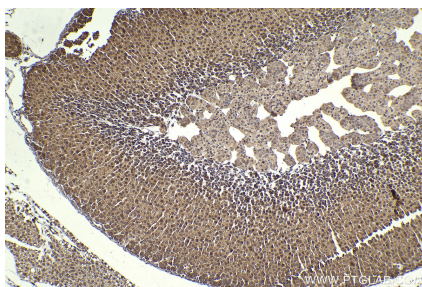
## Synonyms

Serine/threonine-protein kinase GSK3A, GSK-3 alpha, GSK 3 alpha, Glycogen synthase kinase-3 alpha, EC:2.7.11.26

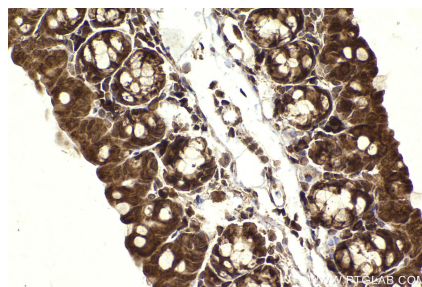
## Selected Validation Data



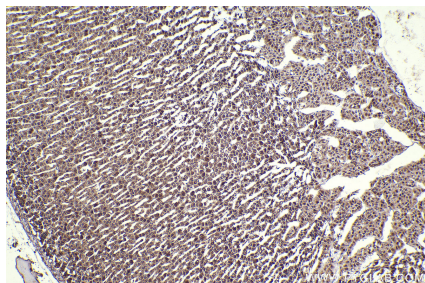
Immunohistochemical analysis of paraffin-embedded human stomach cancer tissue slide using KHC2292 (GSK3A IHC Kit).



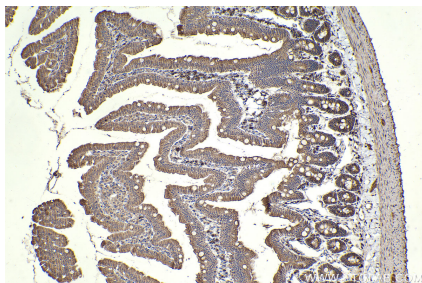
Immunohistochemical analysis of paraffin-embedded mouse adrenal gland tissue slide using KHC2292 (GSK3A IHC Kit).



Immunohistochemical analysis of paraffin-embedded mouse small intestine tissue slide using KHC2292 (GSK3A IHC Kit).



Immunohistochemical analysis of paraffin-embedded rat adrenal gland tissue slide using KHC2292 (GSK3A IHC Kit).



Immunohistochemical analysis of paraffin-embedded rat small intestine tissue slide using KHC2292 (GSK3A IHC Kit).