

# IHC*easy* LMAN1 Ready-To-Use IHC Kit

Catalog Number: **KHC2287**

## General Information

Sample type:  
FFPE tissue  
Cited sample type:  
Reactivity:  
Human, Mouse, Rat  
Cited Reactivity:

Assay type:  
Immunohistochemistry  
Primary antibody type:  
Rabbit Polyclonal  
Secondary antibody type:  
Polymer-HRP-Goat anti-Rabbit

## Kit Component

Component	Size	Concentration
Antigen Retrieval Buffer	100 mL	50×
Washing Buffer	100 mL ×2	20×
Blocking Buffer	5 mL	RTU
Primary Antibody	5 mL	RTU
Secondary Antibody	5 mL	RTU
Chromogen Component A	0.2 mL	RTU
Chromogen Component B	4 mL	RTU
Signal Enhancer	5 mL	RTU
Counter Staining Reagent	5 mL	RTU
Mounting Media	5 mL	RTU
Control Slide	1 slide (Optional)	FFPE
Datasheet	1 Copy	
Manual	1 Copy	

## Storage Instructions

All the reagents are stored at 2-8°C. The kit is stable for 6 months from the date of receipt.

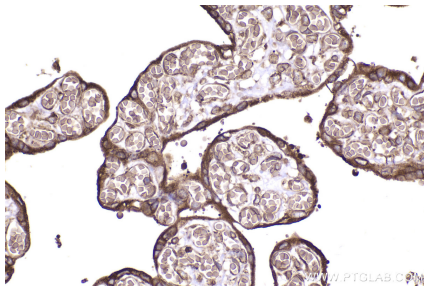
## Background

ERGIC-53 (also known as LMAN1 or MR60) is a membrane mannose-specific lectin that selectively transports its cargo proteins from ER to ER-Golgi intermediate compartment (ERGIC) and Golgi, functioning as a cargo transport receptor for glycoproteins. Mutations in ERGIC-53 cause combined deficiency of coagulation factors V and VIII.

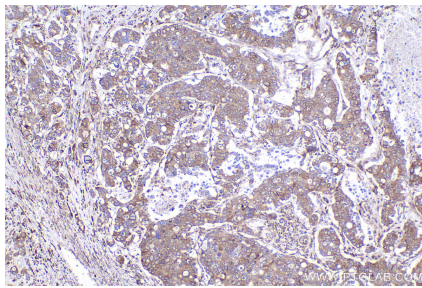
## Synonyms

ERGIC-53, ERGIC 53, gp58, FMFD1, F5F8D

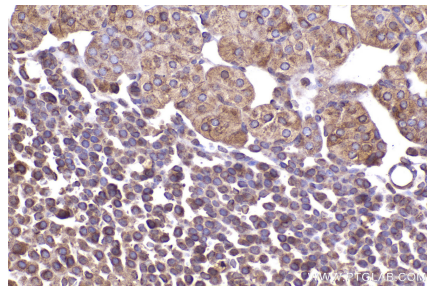
## Selected Validation Data



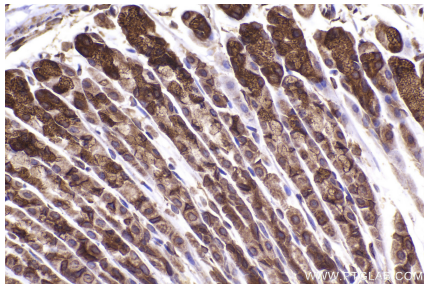
Immunohistochemical analysis of paraffin-embedded human placenta tissue slide using KHC2287 (LMAN1 IHC Kit).



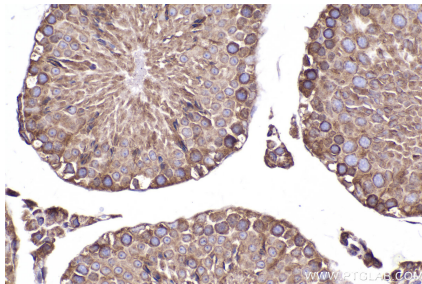
Immunohistochemical analysis of paraffin-embedded human stomach cancer tissue slide using KHC2287 (LMAN1 IHC Kit).



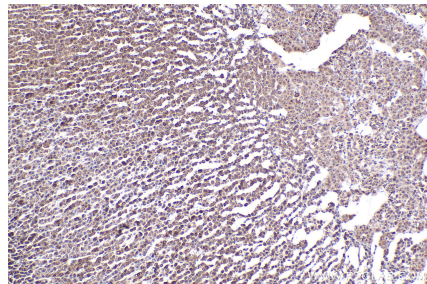
Immunohistochemical analysis of paraffin-embedded mouse adrenal gland tissue slide using KHC2287 (LMAN1 IHC Kit).



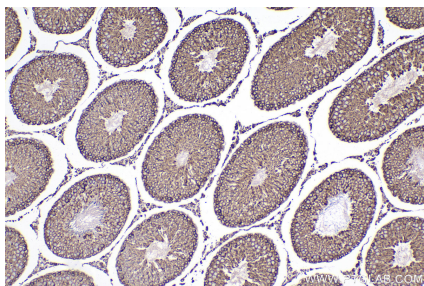
Immunohistochemical analysis of paraffin-embedded mouse stomach tissue slide using KHC2287 (LMAN1 IHC Kit).



Immunohistochemical analysis of paraffin-embedded mouse testis tissue slide using KHC2287 (LMAN1 IHC Kit).



Immunohistochemical analysis of paraffin-embedded rat adrenal gland tissue slide using KHC2287 (LMAN1 IHC Kit).



Immunohistochemical analysis of paraffin-embedded rat testis tissue slide using KHC2287 (LMAN1 IHC Kit).