

IHC*easy* BRCC3 Ready-To-Use IHC Kit

Catalog Number: **KHC2278**

General Information

Sample type:
FFPE tissue
Cited sample type:
Reactivity:
Human, Mouse
Cited Reactivity:

Assay type:
Immunohistochemistry
Primary antibody type:
Rabbit Polyclonal
Secondary antibody type:
Polymer-HRP-Goat anti-Rabbit

Kit Component

Component	Size	Concentration
Antigen Retrieval Buffer	100 mL	50×
Washing Buffer	100 mL ×2	20×
Blocking Buffer	5 mL	RTU
Primary Antibody	5 mL	RTU
Secondary Antibody	5 mL	RTU
Chromogen Component A	0.2 mL	RTU
Chromogen Component B	4 mL	RTU
Signal Enhancer	5 mL	RTU
Counter Staining Reagent	5 mL	RTU
Mounting Media	5 mL	RTU
Control Slide	1 slide (Optional)	FFPE
Datasheet	1 Copy	
Manual	1 Copy	

Storage Instructions

All the reagents are stored at 2-8°C. The kit is stable for 6 months from the date of receipt.

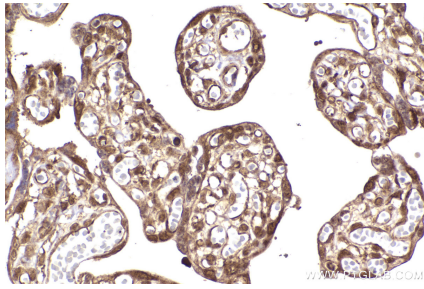
Background

BRCA1-BRCA2-containing complex subunit 3 (BRCC3), a Lys-63-specific deubiquitinase, is a member of the JAMM/MPN family of zinc metalloproteases. BRCC3 have been shown to promote the inflammasome activation by deubiquitinating NOD-like receptor containing pyrin domain 3 (NLRP3). BRCC3 is associated with G2/M arrest in breast cancer cells and DNA damage. The expression of BRCC3 is associated with increased cell proliferation.

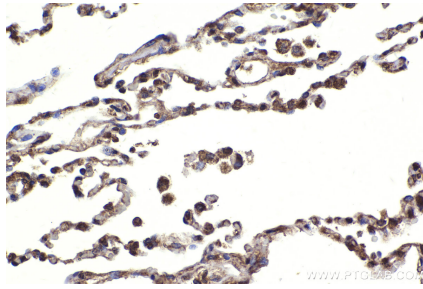
Synonyms

C6.1A, BRISC complex subunit BRCC36, BRCC36, BRCA1-A complex subunit BRCC36, BRCA1/BRCA2-containing complex subunit 36

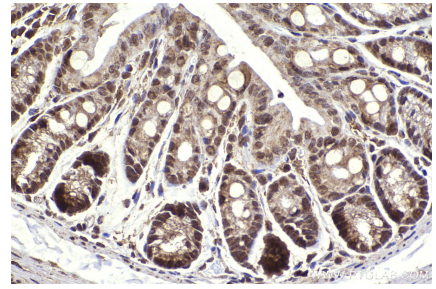
Selected Validation Data



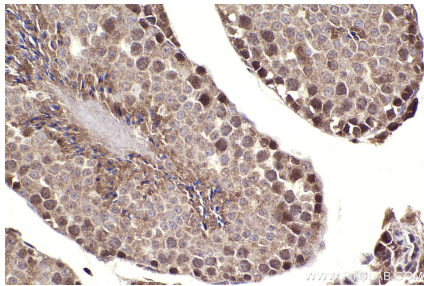
Immunohistochemical analysis of paraffin-embedded human placenta tissue slide using KHC2278 (BRCC3 IHC Kit).



Immunohistochemical analysis of paraffin-embedded human lung tissue slide using KHC2278 (BRCC3 IHC Kit).



Immunohistochemical analysis of paraffin-embedded mouse colon tissue slide using KHC2278 (BRCC3 IHC Kit).



Immunohistochemical analysis of paraffin-embedded mouse testis tissue slide using KHC2278 (BRCC3 IHC Kit).