

IHC*easy* ATP1A1 Ready-To-Use IHC Kit

Catalog Number: **KHC2275**

General Information

Sample type:
FFPE tissue
Cited sample type:
Reactivity:
Human, Mouse
Cited Reactivity:

Assay type:
Immunohistochemistry
Primary antibody type:
Rabbit Polyclonal
Secondary antibody type:
Polymer-HRP-Goat anti-Rabbit

Kit Component

Component	Size	Concentration
Antigen Retrieval Buffer	100 mL	50×
Washing Buffer	100 mL ×2	20×
Blocking Buffer	5 mL	RTU
Primary Antibody	5 mL	RTU
Secondary Antibody	5 mL	RTU
Chromogen Component A	0.2 mL	RTU
Chromogen Component B	4 mL	RTU
Signal Enhancer	5 mL	RTU
Counter Staining Reagent	5 mL	RTU
Mounting Media	5 mL	RTU
Control Slide	1 slide (Optional)	FFPE
Datasheet	1 Copy	
Manual	1 Copy	

Storage Instructions

All the reagents are stored at 2-8°C. The kit is stable for 6 months from the date of receipt.

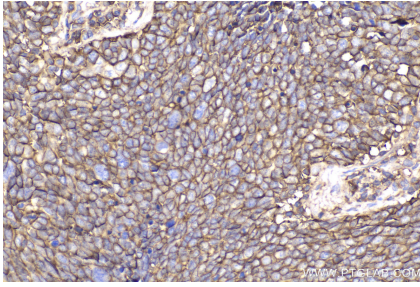
Background

ATP1A1 is the catalytic component of Na⁺/K⁺-ATPase which is a membrane bound enzyme primarily involved in generation of Na⁺ and K⁺ gradients across plasma membranes and in determination of cytoplasmic Na⁺ levels. ATP1A1 is a ubiquitously expressed membrane protein and often used as the marker or internal control for plasma membrane protein.

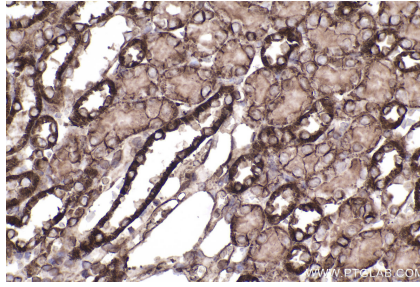
Synonyms

Na⁺/K⁺ ATPase 1, Na(+)/K(+) ATPase alpha-1 subunit, Na(+)/K(+) ATPase 1, EC:7.2.2.13, Atpa 1

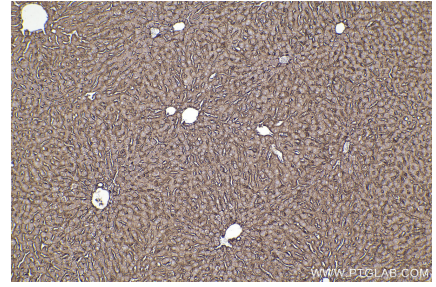
Selected Validation Data



Immunohistochemical analysis of paraffin-embedded human lung cancer tissue slide using KHC2275 (ATP1A1 IHC Kit).



Immunohistochemical analysis of paraffin-embedded mouse kidney tissue slide using KHC2275 (ATP1A1 IHC Kit).



Immunohistochemical analysis of paraffin-embedded mouse liver tissue slide using KHC2275 (ATP1A1 IHC Kit).