

IHC*easy* EAAT2/SLC1A2 Ready-To-Use IHC Kit

Catalog Number: **KHC2269**

General Information

Sample type:
FFPE tissue
Cited sample type:
Reactivity:
Human, Mouse, Rat
Cited Reactivity:

Assay type:
Immunohistochemistry
Primary antibody type:
Rabbit Polyclonal
Secondary antibody type:
Polymer-HRP-Goat anti-Rabbit

Kit Component

Component	Size	Concentration
Antigen Retrieval Buffer	100 mL	50×
Washing Buffer	100 mL ×2	20×
Blocking Buffer	5 mL	RTU
Primary Antibody	5 mL	RTU
Secondary Antibody	5 mL	RTU
Chromogen Component A	0.2 mL	RTU
Chromogen Component B	4 mL	RTU
Signal Enhancer	5 mL	RTU
Counter Staining Reagent	5 mL	RTU
Mounting Media	5 mL	RTU
Control Slide	1 slide (Optional)	FFPE
Datasheet	1 Copy	
Manual	1 Copy	

Storage Instructions

All the reagents are stored at 2-8°C. The kit is stable for 6 months from the date of receipt.

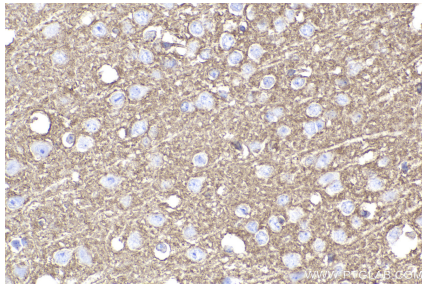
Background

EAAT2 (also known as GLT-1), is encoded by SLC1A2 and is a glutamate transporter which can clear the majority of extracellular glutamate in brain and prevent brain seizures. Three isoforms of EAAT2 exist due to the alternative splicing.

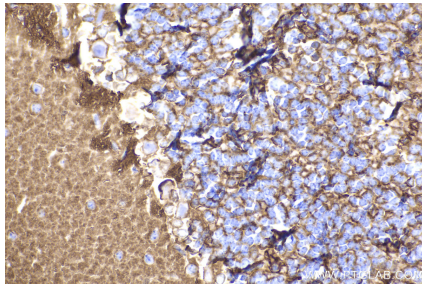
Synonyms

SLC1A2, GLT1, EAAT2, Sodium-dependent glutamate/aspartate transporter 2, GLT 1

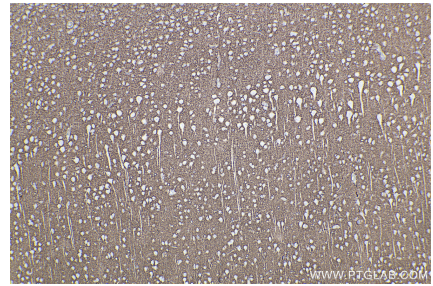
Selected Validation Data



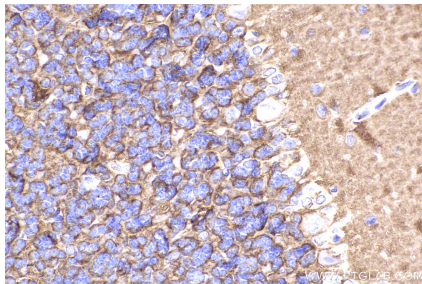
Immunohistochemical analysis of paraffin-embedded mouse brain tissue slide using KHC2269 (EAAT2/SLC1A2 IHC Kit).



Immunohistochemical analysis of paraffin-embedded mouse cerebellum tissue slide using KHC2269 (EAAT2/SLC1A2 IHC Kit).



Immunohistochemical analysis of paraffin-embedded rat brain tissue slide using KHC2269 (EAAT2/SLC1A2 IHC Kit).



Immunohistochemical analysis of paraffin-embedded rat cerebellum tissue slide using KHC2269 (EAAT2/SLC1A2 IHC Kit).