

IHC*easy* MAPK8/JNK Ready-To-Use IHC Kit

Catalog Number: **KHC2267**

General Information

Sample type:
FFPE tissue
Cited sample type:
Reactivity:
Human, Mouse, Rat
Cited Reactivity:

Assay type:
Immunohistochemistry
Primary antibody type:
Rabbit Polyclonal
Secondary antibody type:
Polymer-HRP-Goat anti-Rabbit

Kit Component

Component	Size	Concentration
Antigen Retrieval Buffer	100 mL	50×
Washing Buffer	100 mL ×2	20×
Blocking Buffer	5 mL	RTU
Primary Antibody	5 mL	RTU
Secondary Antibody	5 mL	RTU
Chromogen Component A	0.2 mL	RTU
Chromogen Component B	4 mL	RTU
Signal Enhancer	5 mL	RTU
Counter Staining Reagent	5 mL	RTU
Mounting Media	5 mL	RTU
Control Slide	1 slide (Optional)	FFPE
Datasheet	1 Copy	
Manual	1 Copy	

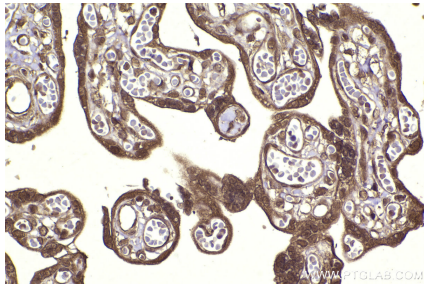
Storage Instructions

All the reagents are stored at 2-8°C. The kit is stable for 6 months from the date of receipt.

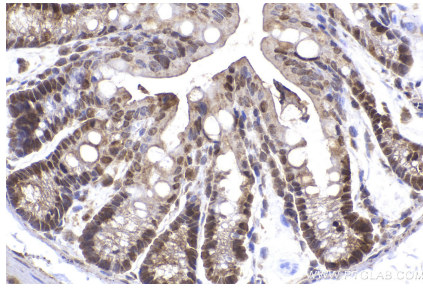
Background

MAPK8(Mitogen-activated protein kinase 8) is also named as JNK1, PRKM8, SAPK1, SAPK1C and belongs to the MAP kinase subfamily. MAPK8 is activated by dual phosphorylation at a Thr-Pro-Tyr motif during response to UV light. MAPK8 functions to phosphorylate c-Jun at N-terminal serine regulatory sites of Ser-63 and Ser-73, mapping within the transactivation domain. Phosphorylation of these sites in response to UV results in transcriptional activation of c-Jun. Primary antibody in this kit can recognize JNK1, JNK2 and JNK3.

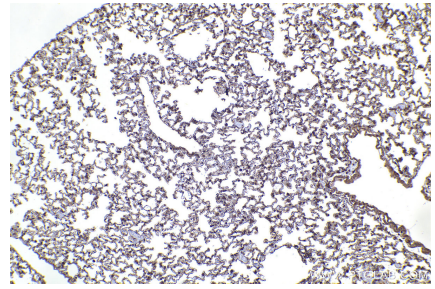
Selected Validation Data



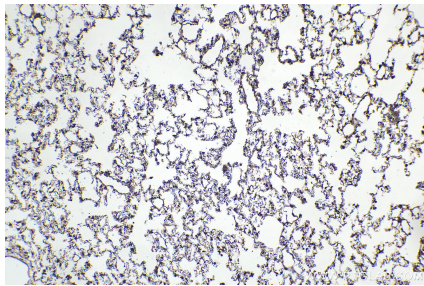
Immunohistochemical analysis of paraffin-embedded human placenta tissue slide using KHC2267 (MAPK8/JNK IHC Kit).



Immunohistochemical analysis of paraffin-embedded mouse colon tissue slide using KHC2267 (MAPK8/JNK IHC Kit).



Immunohistochemical analysis of paraffin-embedded mouse lung tissue slide using KHC2267 (MAPK8/JNK IHC Kit).



Immunohistochemical analysis of paraffin-embedded rat lung tissue slide using KHC2267 (MAPK8/JNK IHC Kit).