

IHC*easy* RPL4 Ready-To-Use IHC Kit

Catalog Number: **KHC2253**

General Information

Sample type:
FFPE tissue
Cited sample type:
Reactivity:
Human, Mouse, Rat
Cited Reactivity:

Assay type:
Immunohistochemistry
Primary antibody type:
Rabbit Polyclonal
Secondary antibody type:
Polymer-HRP-Goat anti-Rabbit

Kit Component

Component	Size	Concentration
Antigen Retrieval Buffer	100 mL	50×
Washing Buffer	100 mL ×2	20×
Blocking Buffer	5 mL	RTU
Primary Antibody	5 mL	RTU
Secondary Antibody	5 mL	RTU
Chromogen Component A	0.2 mL	RTU
Chromogen Component B	4 mL	RTU
Signal Enhancer	5 mL	RTU
Counter Staining Reagent	5 mL	RTU
Mounting Media	5 mL	RTU
Control Slide	1 slide (Optional)	FFPE
Datasheet	1 Copy	
Manual	1 Copy	

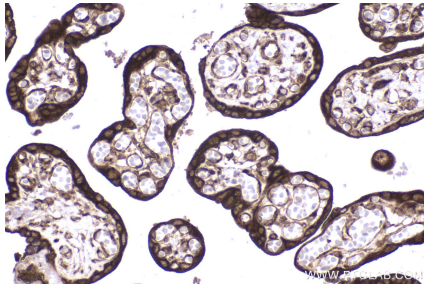
Storage Instructions

All the reagents are stored at 2-8°C. The kit is stable for 6 months from the date of receipt.

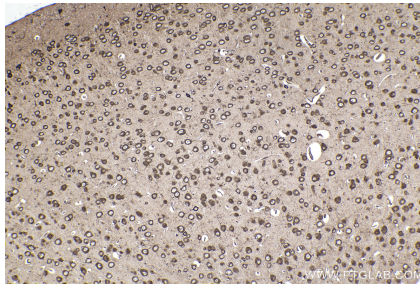
Background

60S ribosomal protein L4 is encoded by RPL4 (or RPL1) gene. RPL4 is a component of 60S subunit of ribosome, and belongs to the L4E family. By interacting with c-Myb, RPL4 plays a important role in c-myc expression in response to growth factor and nutritional signals. Recently RPL4 was reported to be able to increase efficiency of viral recoding sequence.

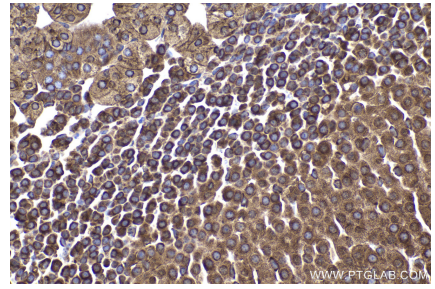
Selected Validation Data



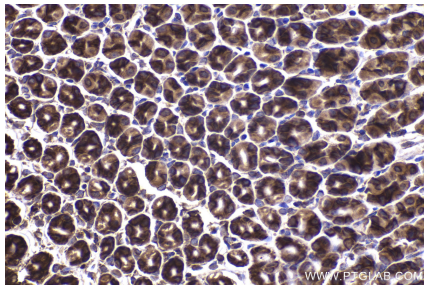
Immunohistochemical analysis of paraffin-embedded human placenta tissue slide using KHC2253 (RPL4 IHC Kit).



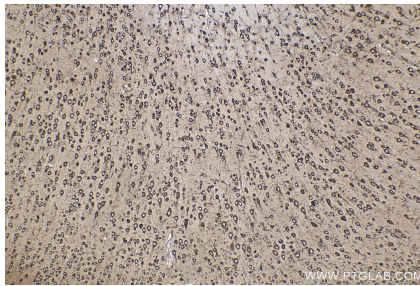
Immunohistochemical analysis of paraffin-embedded mouse brain tissue slide using KHC2253 (RPL4 IHC Kit).



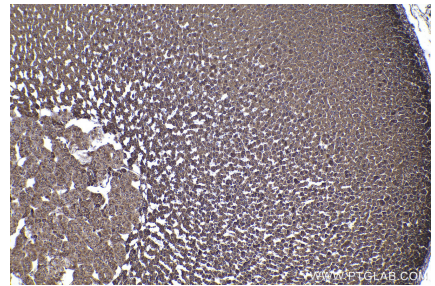
Immunohistochemical analysis of paraffin-embedded mouse adrenal gland tissue slide using KHC2253 (RPL4 IHC Kit).



Immunohistochemical analysis of paraffin-embedded mouse stomach tissue slide using KHC2253 (RPL4 IHC Kit).



Immunohistochemical analysis of paraffin-embedded rat brain tissue slide using KHC2253 (RPL4 IHC Kit).



Immunohistochemical analysis of paraffin-embedded rat adrenal gland tissue slide using KHC2253 (RPL4 IHC Kit).