

IHC*easy* PSMC2 Ready-To-Use IHC Kit

Catalog Number: **KHC2249**

General Information

Sample type:
FFPE tissue
Cited sample type:
Reactivity:
Human, Mouse, Rat
Cited Reactivity:

Assay type:
Immunohistochemistry
Primary antibody type:
Rabbit Polyclonal
Secondary antibody type:
Polymer-HRP-Goat anti-Rabbit

Kit Component

| Component | Size | Concentration |
|--------------------------|--------------------|---------------|
| Antigen Retrieval Buffer | 100 mL | 50× |
| Washing Buffer | 100 mL ×2 | 20× |
| Blocking Buffer | 5 mL | RTU |
| Primary Antibody | 5 mL | RTU |
| Secondary Antibody | 5 mL | RTU |
| Chromogen Component A | 0.2 mL | RTU |
| Chromogen Component B | 4 mL | RTU |
| Signal Enhancer | 5 mL | RTU |
| Counter Staining Reagent | 5 mL | RTU |
| Mounting Media | 5 mL | RTU |
| Control Slide | 1 slide (Optional) | FFPE |
| Datasheet | 1 Copy | |
| Manual | 1 Copy | |

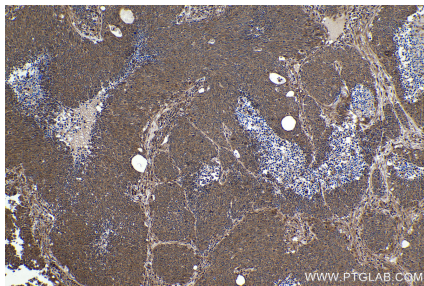
Storage Instructions

All the reagents are stored at 2-8°C. The kit is stable for 6 months from the date of receipt.

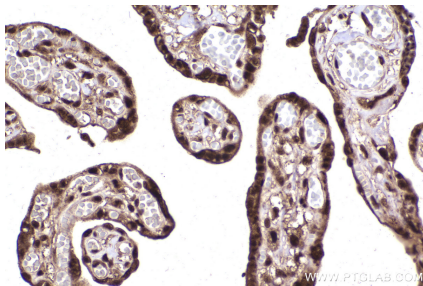
Background

PSMC2 is also named as MSS1 and belongs to the AAA ATPase family. PSMC2 is 1 of 6 putative ATPases contained within the regulatory complex. PSMC2 is first identified as a possible cellular factor that cooperates with the human immunodeficiency virus-1 (HIV-1) protein Tat, a potent activator of virus gene expression. The PSMC2 gene product works in association with the small subunit of mitoribosomes and seems to play some part in mitochondrial translation.

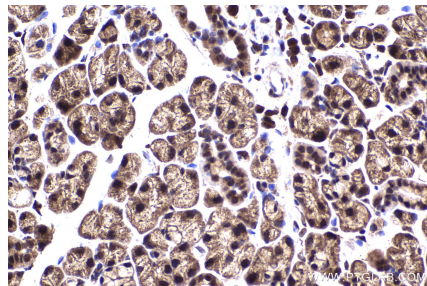
Selected Validation Data



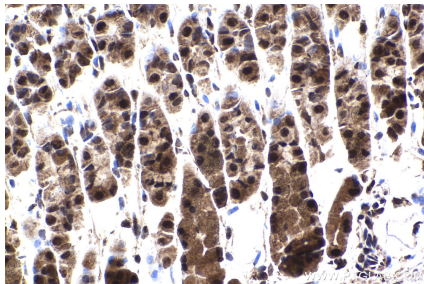
Immunohistochemical analysis of paraffin-embedded human lung cancer tissue slide using KHC2249 (PSMC2 IHC Kit).



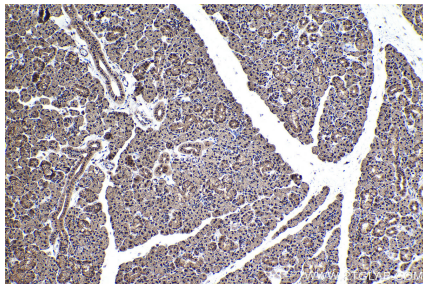
Immunohistochemical analysis of paraffin-embedded human placenta tissue slide using KHC2249 (PSMC2 IHC Kit).



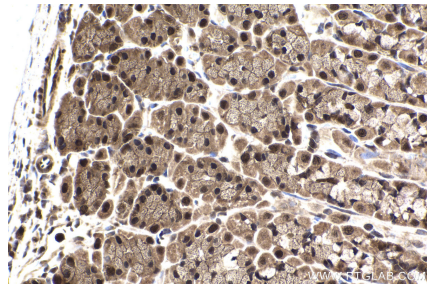
Immunohistochemical analysis of paraffin-embedded mouse salivary gland tissue slide using KHC2249 (PSMC2 IHC Kit).



Immunohistochemical analysis of paraffin-embedded mouse stomach tissue slide using KHC2249 (PSMC2 IHC Kit).



Immunohistochemical analysis of paraffin-embedded rat salivary gland tissue slide using KHC2249 (PSMC2 IHC Kit).



Immunohistochemical analysis of paraffin-embedded rat stomach tissue slide using KHC2249 (PSMC2 IHC Kit).