

IHC*easy* HSPA1L Ready-To-Use IHC Kit

Catalog Number: **KHC2243**

General Information

Sample type:
FFPE tissue
Cited sample type:
Reactivity:
Human, Mouse, Rat
Cited Reactivity:

Assay type:
Immunohistochemistry
Primary antibody type:
Mouse Monoclonal
Secondary antibody type:
Polymer-HRP-Goat anti-Mouse

Kit Component

Component	Size	Concentration
Antigen Retrieval Buffer	100 mL	50×
Washing Buffer	100 mL ×2	20×
Blocking Buffer	5 mL	RTU
Primary Antibody	5 mL	RTU
Secondary Antibody	5 mL	RTU
Chromogen Component A	0.2 mL	RTU
Chromogen Component B	4 mL	RTU
Signal Enhancer	5 mL	RTU
Counter Staining Reagent	5 mL	RTU
Mounting Media	5 mL	RTU
Control Slide	1 slide (Optional)	FFPE
Datasheet	1 Copy	
Manual	1 Copy	

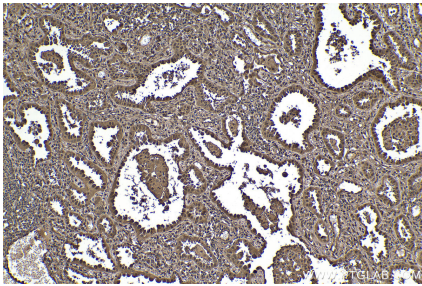
Storage Instructions

All the reagents are stored at 2-8°C. The kit is stable for 6 months from the date of receipt.

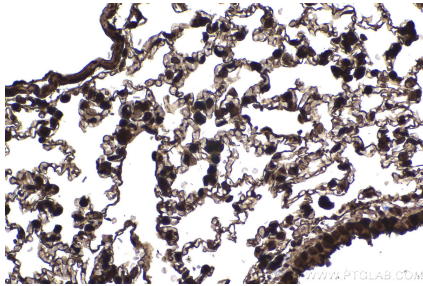
Background

HSPA1L (Hsp70-like protein 1, also known as HSP70-hom) is a member of Hsp70 family of heat shock proteins. Recently it has been reported that HSPA1L can interact with TLR4, activate dendritic cells and induce Th1 Response.

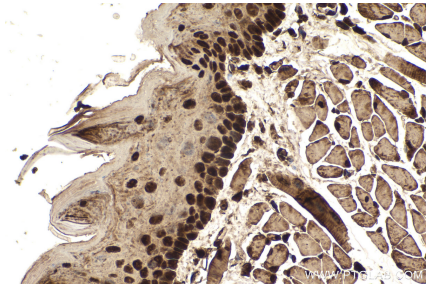
Selected Validation Data



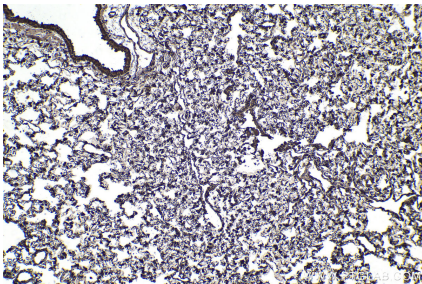
Immunohistochemical analysis of paraffin-embedded human lung cancer tissue slide using KHC2243 (HSPA1L IHC Kit).



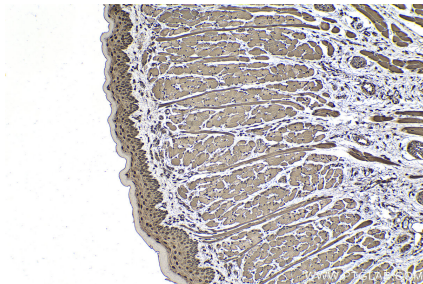
Immunohistochemical analysis of paraffin-embedded mouse lung tissue slide using KHC2243 (HSPA1L IHC Kit).



Immunohistochemical analysis of paraffin-embedded mouse tongue tissue slide using KHC2243 (HSPA1L IHC Kit).



Immunohistochemical analysis of paraffin-embedded rat lung tissue slide using KHC2243 (HSPA1L IHC Kit).



Immunohistochemical analysis of paraffin-embedded rat tongue tissue slide using KHC2243 (HSPA1L IHC Kit).