

IHC*easy* PPP2R1A Ready-To-Use IHC Kit

Catalog Number: **KHC2226**

General Information

Sample type:
FFPE tissue
Cited sample type:
Reactivity:
Human, Mouse, Rat
Cited Reactivity:

Assay type:
Immunohistochemistry
Primary antibody type:
Rabbit Polyclonal
Secondary antibody type:
Polymer-HRP-Goat anti-Rabbit

Kit Component

| Component | Size | Concentration |
|--------------------------|--------------------|---------------|
| Antigen Retrieval Buffer | 100 mL | 50× |
| Washing Buffer | 100 mL ×2 | 20× |
| Blocking Buffer | 5 mL | RTU |
| Primary Antibody | 5 mL | RTU |
| Secondary Antibody | 5 mL | RTU |
| Chromogen Component A | 0.2 mL | RTU |
| Chromogen Component B | 4 mL | RTU |
| Signal Enhancer | 5 mL | RTU |
| Counter Staining Reagent | 5 mL | RTU |
| Mounting Media | 5 mL | RTU |
| Control Slide | 1 slide (Optional) | FFPE |
| Datasheet | 1 Copy | |
| Manual | 1 Copy | |

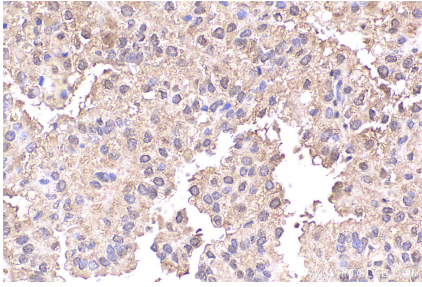
Storage Instructions

All the reagents are stored at 2-8°C. The kit is stable for 6 months from the date of receipt.

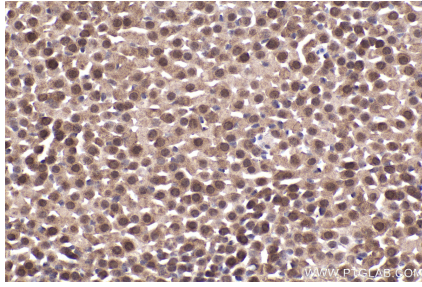
Background

PPP2R1A belongs to the phosphatase 2A regulatory subunit A family. PPP2R1A encodes the α -isoform of the scaffolding subunit of the serine/threonine protein phosphatase 2A (PP2A) holoenzyme. This tumour suppressor complex is involved in growth and survival pathways and PPP2R1A mutations in endometrial high-grade serous carcinomas are a frequent and potentially targetable feature of this disease. The PPP2R1A gene has 86% identity with the PPP2R1B gene.

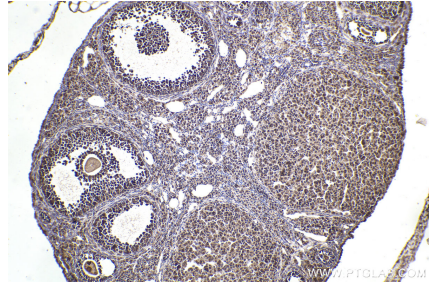
Selected Validation Data



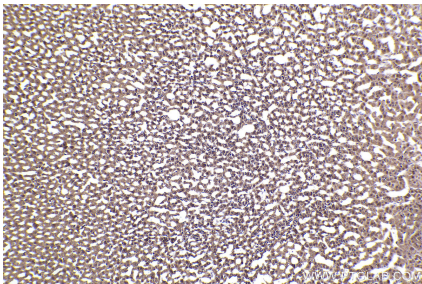
Immunohistochemical analysis of paraffin-embedded human renal cell carcinoma tissue slide using KHC2226 (PPP2R1A IHC Kit).



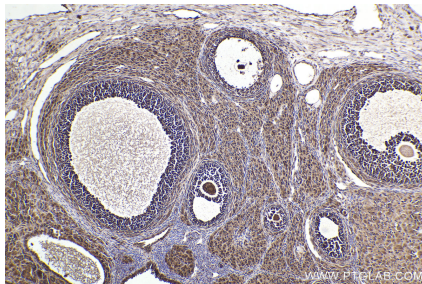
Immunohistochemical analysis of paraffin-embedded mouse adrenal gland tissue slide using KHC2226 (PPP2R1A IHC Kit).



Immunohistochemical analysis of paraffin-embedded mouse ovary tissue slide using KHC2226 (PPP2R1A IHC Kit).



Immunohistochemical analysis of paraffin-embedded rat adrenal gland tissue slide using KHC2226 (PPP2R1A IHC Kit).



Immunohistochemical analysis of paraffin-embedded rat ovary tissue slide using KHC2226 (PPP2R1A IHC Kit).