

# IHC*easy* FH Ready-To-Use IHC Kit

Catalog Number: **KHC2167**

## General Information

Sample type:  
FFPE tissue  
Cited sample type:  
Reactivity:  
Human, Mouse, Rat  
Cited Reactivity:

Assay type:  
Immunohistochemistry  
Primary antibody type:  
Rabbit Recombinant  
Secondary antibody type:  
Polymer-HRP-Goat anti-Rabbit

## Kit Component

Component	Size	Concentration
Antigen Retrieval Buffer	100 mL	50×
Washing Buffer	100 mL ×2	20×
Blocking Buffer	5 mL	RTU
Primary Antibody	5 mL	RTU
Secondary Antibody	5 mL	RTU
Chromogen Component A	0.2 mL	RTU
Chromogen Component B	4 mL	RTU
Signal Enhancer	5 mL	RTU
Counter Staining Reagent	5 mL	RTU
Mounting Media	5 mL	RTU
Control Slide	1 slide (Optional)	FFPE
Datasheet	1 Copy	
Manual	1 Copy	

## Storage Instructions

All the reagents are stored at 2-8°C. The kit is stable for 6 months from the date of receipt.

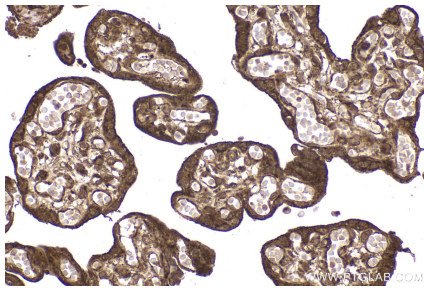
## Background

FH(fumarate hydratase) belongs to the class-II fumarase/aspartase family. It is an enzymatic component of the tricarboxylic acid cycle, catalyzing the conversion of fumarate to malate. FH also acts as a tumor suppressor function of FH in sporadic kidney cancer. Mutations in this gene can cause fumarase deficiency and lead to progressive encephalopathy.

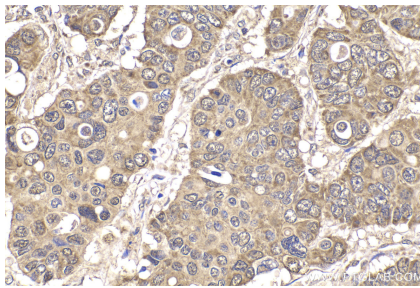
## Synonyms

FH, Fumarase, fumarate hydratase, HLRCC, LRCC, MCL, MCUL1

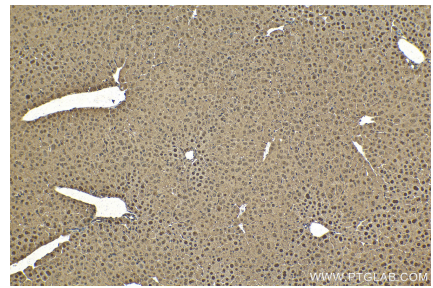
## Selected Validation Data



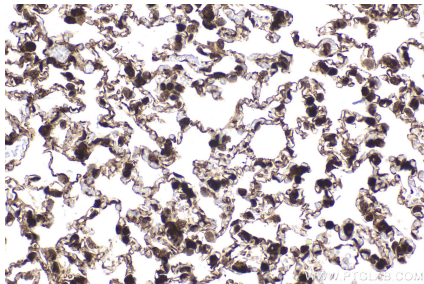
Immunohistochemical analysis of paraffin-embedded human placenta tissue slide using KHC2167 (FH IHC Kit).



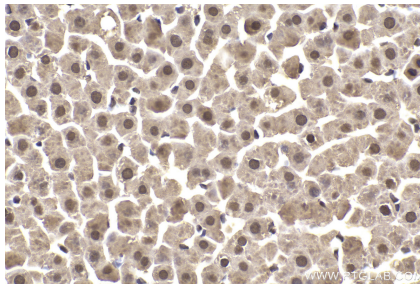
Immunohistochemical analysis of paraffin-embedded human stomach cancer tissue slide using KHC2167 (FH IHC Kit).



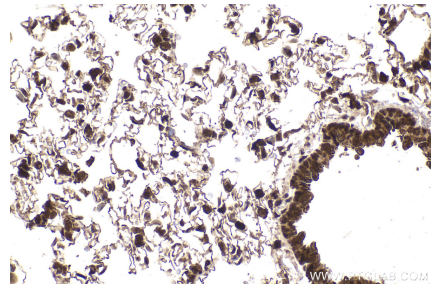
Immunohistochemical analysis of paraffin-embedded mouse liver tissue slide using KHC2167 (FH IHC Kit).



Immunohistochemical analysis of paraffin-embedded mouse lung tissue slide using KHC2167 (FH IHC Kit).



Immunohistochemical analysis of paraffin-embedded rat liver tissue slide using KHC2167 (FH IHC Kit).



Immunohistochemical analysis of paraffin-embedded rat lung tissue slide using KHC2167 (FH IHC Kit).