

IHC*easy* POLR3D Ready-To-Use IHC Kit

Catalog Number: **KHC2161**

General Information

Sample type:
FFPE tissue
Cited sample type:
Reactivity:
Human
Cited Reactivity:

Assay type:
Immunohistochemistry
Primary antibody type:
Rabbit Polyclonal
Secondary antibody type:
Polymer-HRP-Goat anti-Rabbit

Kit Component

Component	Size	Concentration
Antigen Retrieval Buffer	100 mL	50×
Washing Buffer	100 mL ×2	20×
Blocking Buffer	5 mL	RTU
Primary Antibody	5 mL	RTU
Secondary Antibody	5 mL	RTU
Chromogen Component A	0.2 mL	RTU
Chromogen Component B	4 mL	RTU
Signal Enhancer	5 mL	RTU
Counter Staining Reagent	5 mL	RTU
Mounting Media	5 mL	RTU
Control Slide	1 slide (Optional)	FFPE
Datasheet	1 Copy	
Manual	1 Copy	

Storage Instructions

All the reagents are stored at 2-8°C. The kit is stable for 6 months from the date of receipt.

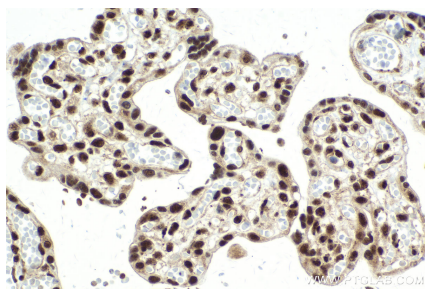
Background

DNA-dependent RNA polymerase catalyzes the transcription of DNA into RNA using the four ribonucleoside triphosphates as substrates. Polymerase (RNA) III (DNA directed) polypeptide D (POLR3D) plays a key role in sensing and limiting infection by intracellular bacteria and DNA viruses and acts as nuclear and cytosolic DNA sensor involved in innate immune response. POLR3D can sense non-self dsDNA that serves as template for transcription into dsRNA.

Synonyms

BN51, BN51T, POLR3D, Protein BN51, RNA polymerase III subunit C4, RPC4, RPC53, RPC53 homolog, TSBN51

Selected Validation Data



Immunohistochemical analysis of paraffin-embedded human placenta tissue slide using KHC2161 (POLR3D IHC Kit).