

# IHC*easy* BMP15 Ready-To-Use IHC Kit

Catalog Number: **KHC2150**

## General Information

Sample type:  
FFPE tissue  
Cited sample type:  
Reactivity:  
Human, Mouse  
Cited Reactivity:

Assay type:  
Immunohistochemistry  
Primary antibody type:  
Rabbit Polyclonal  
Secondary antibody type:  
Polymer-HRP-Goat anti-Rabbit

## Kit Component

Component	Size	Concentration
Antigen Retrieval Buffer	100 mL	50×
Washing Buffer	100 mL ×2	20×
Blocking Buffer	5 mL	RTU
Primary Antibody	5 mL	RTU
Secondary Antibody	5 mL	RTU
Chromogen Component A	0.2 mL	RTU
Chromogen Component B	4 mL	RTU
Signal Enhancer	5 mL	RTU
Counter Staining Reagent	5 mL	RTU
Mounting Media	5 mL	RTU
Control Slide	1 slide (Optional)	FFPE
Datasheet	1 Copy	
Manual	1 Copy	

## Storage Instructions

All the reagents are stored at 2-8°C. The kit is stable for 6 months from the date of receipt.

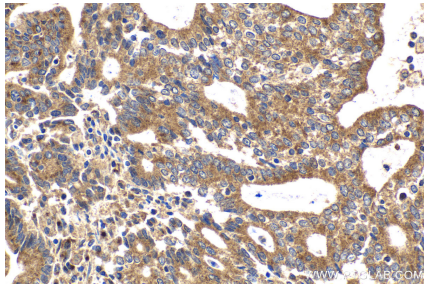
## Background

BMP15, also named as GDF9B, is a member of the bone morphogenetic protein family which is part of the transforming growth factor beta superfamily. The transforming growth factor beta superfamily includes large families of growth and differentiation factors. BMP15 may be involved follicular development and oocyte-specific growth/differentiation factor that stimulates folliculogenesis and granulosa cell (GC) growth. Mutation of BMP15 will cause of ovarian dysgenesis type 2 (ODG2) and premature ovarian failure type 4 (POF4).

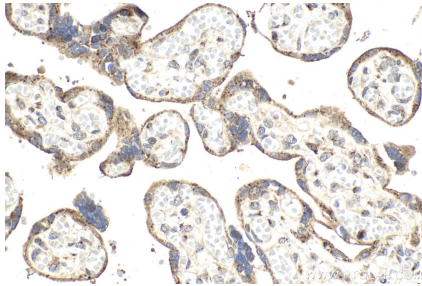
## Synonyms

BMP15,BMP 15,BMP-15,Bone morphogenetic protein 15

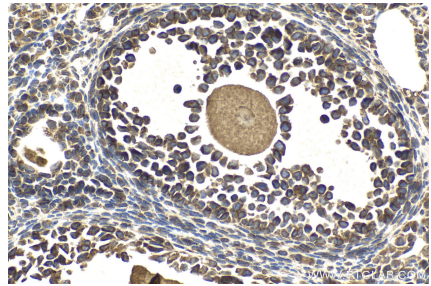
## Selected Validation Data



Immunohistochemical analysis of paraffin-embedded human endometrial cancer tissue slide using KHC2150 (BMP15 IHC Kit).



Immunohistochemical analysis of paraffin-embedded human placenta tissue slide using KHC2150 (BMP15 IHC Kit).



Immunohistochemical analysis of paraffin-embedded mouse ovary tissue slide using KHC2150 (BMP15 IHC Kit).