

IHC*easy* MAP4K4 Ready-To-Use IHC Kit

Catalog Number: **KHC2149**

General Information

Sample type:
FFPE tissue
Cited sample type:
Reactivity:
Human, Mouse
Cited Reactivity:

Assay type:
Immunohistochemistry
Primary antibody type:
Rabbit Polyclonal
Secondary antibody type:
Polymer-HRP-Goat anti-Rabbit

Kit Component

Component	Size	Concentration
Antigen Retrieval Buffer	100 mL	50×
Washing Buffer	100 mL ×2	20×
Blocking Buffer	5 mL	RTU
Primary Antibody	5 mL	RTU
Secondary Antibody	5 mL	RTU
Chromogen Component A	0.2 mL	RTU
Chromogen Component B	4 mL	RTU
Signal Enhancer	5 mL	RTU
Counter Staining Reagent	5 mL	RTU
Mounting Media	5 mL	RTU
Control Slide	1 slide (Optional)	FFPE
Datasheet	1 Copy	
Manual	1 Copy	

Storage Instructions

All the reagents are stored at 2-8°C. The kit is stable for 6 months from the date of receipt.

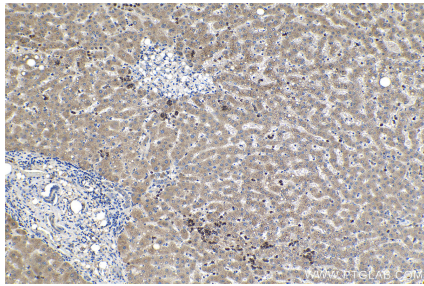
Background

MAP4K4, also named as RAB8IPL1, GLK and MEKKK4, belongs to the protein kinase superfamily, STE Ser/Thr protein kinase family and STE20 subfamily. It may play a role in the response to environmental stress. MAP4K4 appears to act upstream of the JUN N-terminal pathway. Primary antibody in this kit is specific to MAP4K4.

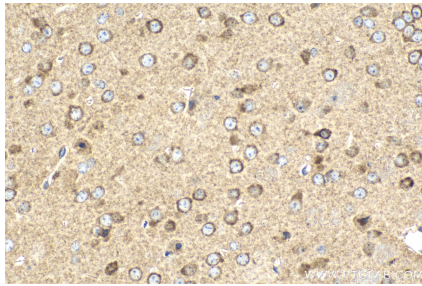
Synonyms

FLH21957, HGK, HPK/GCK like kinase HGK, KIAA0687, MAP4K4, MEK kinase kinase 4, MEKKK 4, Nck interacting kinase, NIK

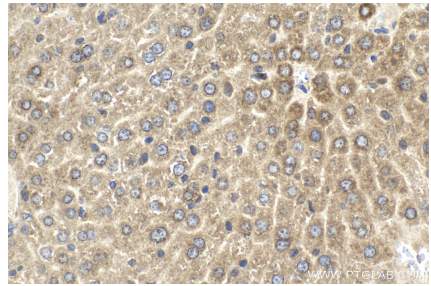
Selected Validation Data



Immunohistochemical analysis of paraffin-embedded human liver tissue slide using KHC2149 (MAP4K4 IHC Kit).



Immunohistochemical analysis of paraffin-embedded mouse brain tissue slide using KHC2149 (MAP4K4 IHC Kit).



Immunohistochemical analysis of paraffin-embedded mouse liver tissue slide using KHC2149 (MAP4K4 IHC Kit).