

IHC*easy* LRAT Ready-To-Use IHC Kit

Catalog Number: **KHC2141**

General Information

Sample type:
FFPE tissue
Cited sample type:
Reactivity:
Human, Mouse, Rat
Cited Reactivity:

Assay type:
Immunohistochemistry
Primary antibody type:
Rabbit Polyclonal
Secondary antibody type:
Polymer-HRP-Goat anti-Rabbit

Kit Component

Component	Size	Concentration
Antigen Retrieval Buffer	100 mL	50×
Washing Buffer	100 mL ×2	20×
Blocking Buffer	5 mL	RTU
Primary Antibody	5 mL	RTU
Secondary Antibody	5 mL	RTU
Chromogen Component A	0.2 mL	RTU
Chromogen Component B	4 mL	RTU
Signal Enhancer	5 mL	RTU
Counter Staining Reagent	5 mL	RTU
Mounting Media	5 mL	RTU
Control Slide	1 slide (Optional)	FFPE
Datasheet	1 Copy	
Manual	1 Copy	

Storage Instructions

All the reagents are stored at 2-8°C. The kit is stable for 6 months from the date of receipt.

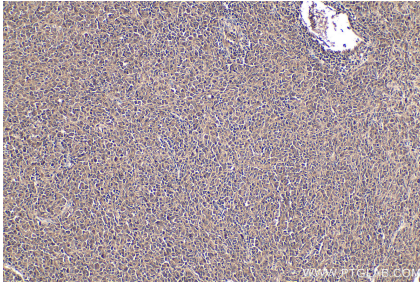
Background

LRAT belongs to the H-rev107 family. LRAT transfers the acyl group from the sn-1 position of phosphatidylcholine to all-trans retinol, producing all-trans retinyl esters. LRAT plays a critical role in vision. It provides the all-trans retinyl ester substrates for the isomerohydrolase which processes the esters into 11-cis-retinol in the retinal pigment epithelium; due to a membrane-associated alcohol dehydrogenase, LRAT monomers interact in membranes and form functional homodimers through protein-protein interactions and disulfide bond formation. Defects in LRAT are a cause of severe early-onset retinal dystrophy (RD). This antibody was generated against the internal residues of human LRAT. It is predicted to detect endogenous LRAT.

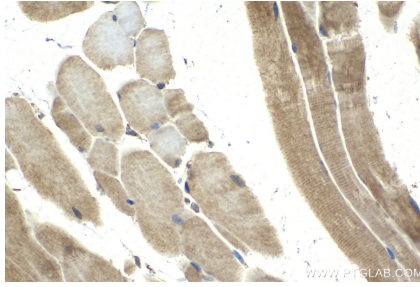
Synonyms

Phosphatidylcholine--retinol O-acyltransferase, Lecithin retinol acyltransferase, EC:2.3.1.135

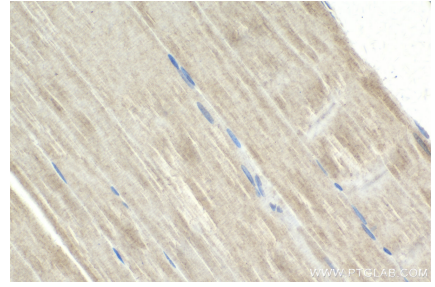
Selected Validation Data



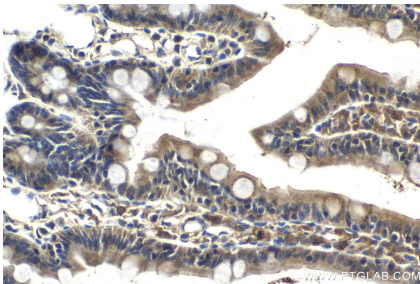
Immunohistochemical analysis of paraffin-embedded human malignant melanoma tissue slide using KHC2141 (LRAT IHC Kit).



Immunohistochemical analysis of paraffin-embedded mouse skeletal muscle tissue slide using KHC2141 (LRAT IHC Kit).



Immunohistochemical analysis of paraffin-embedded rat skeletal muscle tissue slide using KHC2141 (LRAT IHC Kit).



Immunohistochemical analysis of paraffin-embedded rat small intestine tissue slide using KHC2141 (LRAT IHC Kit).