

# IHC*easy* CDK14/PFTK1 Ready-To-Use IHC Kit

Catalog Number: **KHC2130**

## General Information

Sample type:  
FFPE tissue  
Cited sample type:  
Reactivity:  
Human, Mouse, Rat  
Cited Reactivity:

Assay type:  
Immunohistochemistry  
Primary antibody type:  
Rabbit Polyclonal  
Secondary antibody type:  
Polymer-HRP-Goat anti-Rabbit

## Kit Component

Component	Size	Concentration
Antigen Retrieval Buffer	100 mL	50×
Washing Buffer	100 mL ×2	20×
Blocking Buffer	5 mL	RTU
Primary Antibody	5 mL	RTU
Secondary Antibody	5 mL	RTU
Chromogen Component A	0.2 mL	RTU
Chromogen Component B	4 mL	RTU
Signal Enhancer	5 mL	RTU
Counter Staining Reagent	5 mL	RTU
Mounting Media	5 mL	RTU
Control Slide	1 slide (Optional)	FFPE
Datasheet	1 Copy	
Manual	1 Copy	

## Storage Instructions

All the reagents are stored at 2-8°C. The kit is stable for 6 months from the date of receipt.

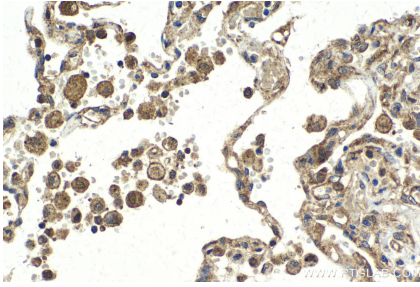
## Background

PFTK1 is a Cdc2-related protein kinase, also named as PFTAIRES1, CDK14 and belongs to the CMGC Ser/Thr protein kinase family and CDC2/CDKX subfamily. It acts as a cyclin-dependent kinases that regulates cell cycle progression and cell proliferation. The PFTK1 protein shows high homology with mouse Pftaire1, a Cdc2-related protein expressed primarily in the postnatal and adult nervous system. The protein contains 2 predicted nuclear localization signals that the N-terminal nuclear localization signals do not play a role in vivo. It has 3 isoforms produced by alternative splicing. Primary antibody in this kit is specific to PFTK1.

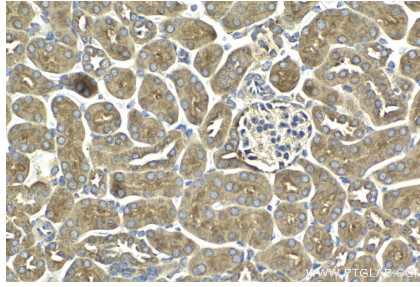
## Synonyms

CDK14, hPFTAIRES1, KIAA0834, PFTAIRES protein kinase 1, PFTAIRES1, PFTK1

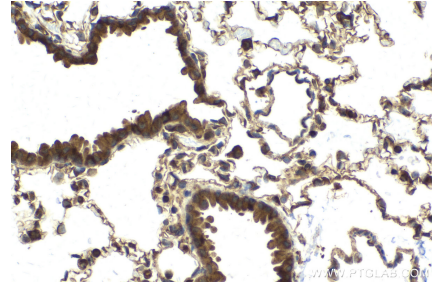
## Selected Validation Data



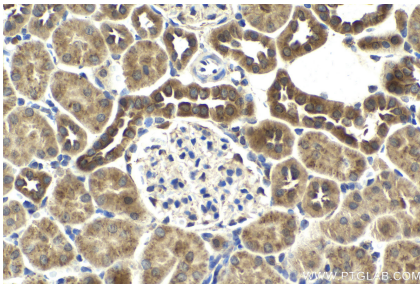
Immunohistochemical analysis of paraffin-embedded human lung tissue slide using KHC2130 (CDK14/PFTK1 IHC Kit).



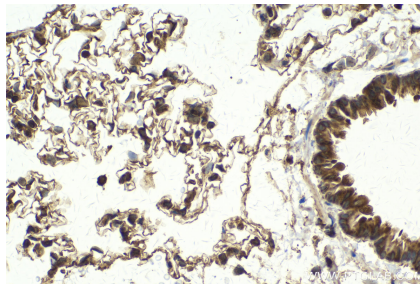
Immunohistochemical analysis of paraffin-embedded mouse kidney tissue slide using KHC2130 (CDK14/PFTK1 IHC Kit).



Immunohistochemical analysis of paraffin-embedded mouse lung tissue slide using KHC2130 (CDK14/PFTK1 IHC Kit).



Immunohistochemical analysis of paraffin-embedded rat kidney tissue slide using KHC2130 (CDK14/PFTK1 IHC Kit).



Immunohistochemical analysis of paraffin-embedded rat lung tissue slide using KHC2130 (CDK14/PFTK1 IHC Kit).