

IHC*easy*TPPP Ready-To-Use IHC Kit

Catalog Number: **KHC2129**

General Information

Sample type:
FFPE tissue
Cited sample type:
Reactivity:
Human, Mouse, Rat
Cited Reactivity:

Assay type:
Immunohistochemistry
Primary antibody type:
Mouse Monoclonal
Secondary antibody type:
Polymer-HRP-Goat anti-Mouse

Kit Component

Component	Size	Concentration
Antigen Retrieval Buffer	100 mL	50×
Washing Buffer	100 mL ×2	20×
Blocking Buffer	5 mL	RTU
Primary Antibody	5 mL	RTU
Secondary Antibody	5 mL	RTU
Chromogen Component A	0.2 mL	RTU
Chromogen Component B	4 mL	RTU
Signal Enhancer	5 mL	RTU
Counter Staining Reagent	5 mL	RTU
Mounting Media	5 mL	RTU
Control Slide	1 slide (Optional)	FFPE
Datasheet	1 Copy	
Manual	1 Copy	

Storage Instructions

All the reagents are stored at 2-8°C. The kit is stable for 6 months from the date of receipt.

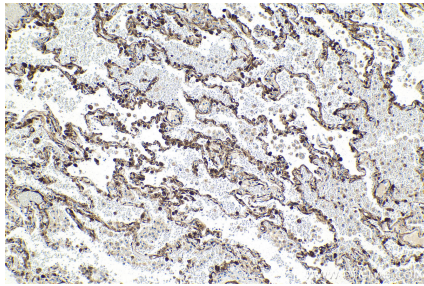
Background

TPPP, also named as TPPP1, P24 and P25, belongs to the TPPP family. TPPP promotes in vitro the polymerization of tubulin into double-walled tubules and polymorphic aggregates or bundled stabilized microtubules blocks. When overexpressed, TPPP inhibits mitotic spindle assembly and nuclear envelope breakdown, apparently without affecting other cellular events.

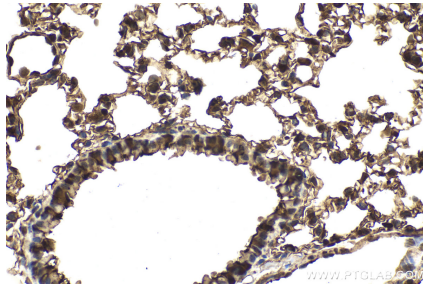
Synonyms

25 kDa brain specific protein, p24, p25, p25 alpha, p25alpha, TPPP, TPPP/p25, TPPP1

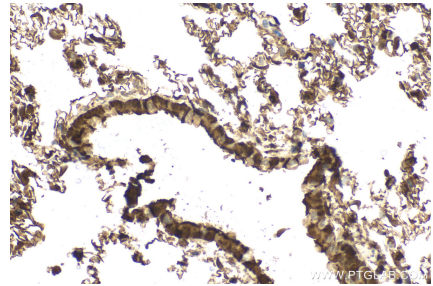
Selected Validation Data



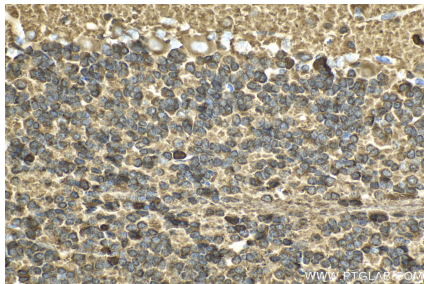
Immunohistochemical analysis of paraffin-embedded human lung tissue slide using KHC2129 (TPPP IHC Kit).



Immunohistochemical analysis of paraffin-embedded mouse lung tissue slide using KHC2129 (TPPP IHC Kit).



Immunohistochemical analysis of paraffin-embedded rat lung tissue slide using KHC2129 (TPPP IHC Kit).



Immunohistochemical analysis of paraffin-embedded rat cerebellum tissue slide using KHC2129 (TPPP IHC Kit).