

IHC*easy* RAD17 Ready-To-Use IHC Kit

Catalog Number: **KHC2123**

General Information

Sample type:
FFPE tissue
Cited sample type:
Reactivity:
Human
Cited Reactivity:

Assay type:
Immunohistochemistry
Primary antibody type:
Rabbit Polyclonal
Secondary antibody type:
Polymer-HRP-Goat anti-Rabbit

Kit Component

Component	Size	Concentration
Antigen Retrieval Buffer	100 mL	50×
Washing Buffer	100 mL ×2	20×
Blocking Buffer	5 mL	RTU
Primary Antibody	5 mL	RTU
Secondary Antibody	5 mL	RTU
Chromogen Component A	0.2 mL	RTU
Chromogen Component B	4 mL	RTU
Signal Enhancer	5 mL	RTU
Counter Staining Reagent	5 mL	RTU
Mounting Media	5 mL	RTU
Control Slide	1 slide (Optional)	FFPE
Datasheet	1 Copy	
Manual	1 Copy	

Storage Instructions

All the reagents are stored at 2-8°C. The kit is stable for 6 months from the date of receipt.

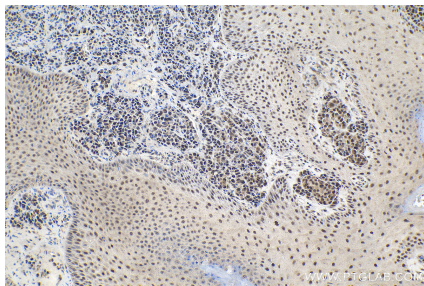
Background

Rad17, a component of the checkpoint clamp loader complex (RAD17/RFC), was originally initially identified as a DNA damage checkpoint protein. Rad17 participates in cell cycle control and DNA damage repair. Rad17 phosphorylation by ATR (ataxia telangiectasia mutated and Rad3-related) kinase is indispensable for the recruitment of Claspin and the activation of Chk1 in response to genotoxic stress.

Synonyms

CCYC, HRAD17, R24L, RAD17, RAD17 homolog (S. pombe), RAD17SP, RAD24, RF C/activator 1 homolog

Selected Validation Data



Immunohistochemical analysis of paraffin-embedded human malignant melanoma tissue slide using KHC2123 (RAD17 IHC Kit).