

IHC*easy* SEC22B Ready-To-Use IHC Kit

Catalog Number: **KHC2112**

General Information

Sample type:
FFPE tissue
Cited sample type:
Reactivity:
Human, Mouse, Rat
Cited Reactivity:

Assay type:
Immunohistochemistry
Primary antibody type:
Rabbit Polyclonal
Secondary antibody type:
Polymer-HRP-Goat anti-Rabbit

Kit Component

Component	Size	Concentration
Antigen Retrieval Buffer	100 mL	50×
Washing Buffer	100 mL ×2	20×
Blocking Buffer	5 mL	RTU
Primary Antibody	5 mL	RTU
Secondary Antibody	5 mL	RTU
Chromogen Component A	0.2 mL	RTU
Chromogen Component B	4 mL	RTU
Signal Enhancer	5 mL	RTU
Counter Staining Reagent	5 mL	RTU
Mounting Media	5 mL	RTU
Control Slide	1 slide (Optional)	FFPE
Datasheet	1 Copy	
Manual	1 Copy	

Storage Instructions

All the reagents are stored at 2-8°C. The kit is stable for 6 months from the date of receipt.

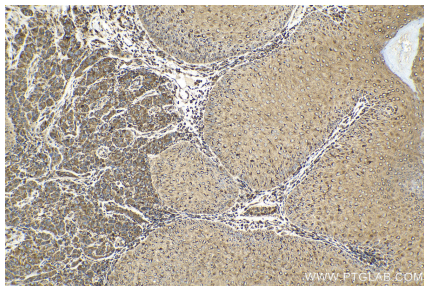
Background

Soluble N-ethylmaleimide-sensitive factor (NSF) attachment protein receptor (SNARE) proteins are critical components of the membrane fusion machinery (PMID: 20163564). SEC22B is a SNARE involved in endoplasmic reticulum (ER)/Golgi membrane trafficking. SEC22B localizes to the ER-Golgi intermediate compartment (ERGIC) and has been identified as a regulator of antigen crosspresentation.

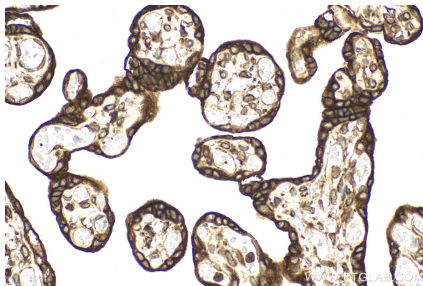
Synonyms

SEC22L1, SEC22 vesicle-trafficcking protein-like 1, SEC22 vesicle-trafficcking protein homolog B, ERS-24, ERS24

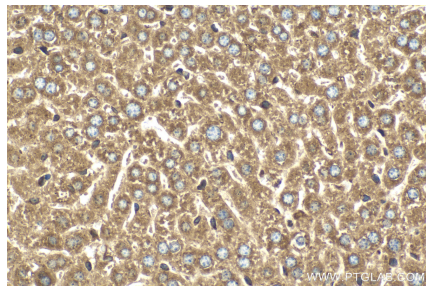
Selected Validation Data



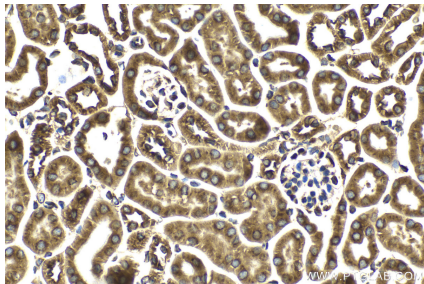
Immunohistochemical analysis of paraffin-embedded human malignant melanoma tissue slide using KHC2112 (SEC22B IHC Kit).



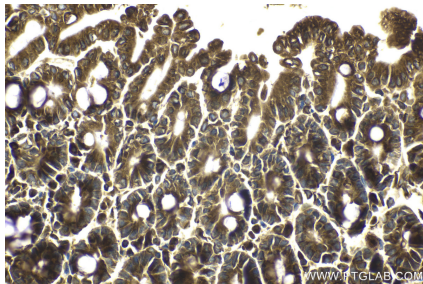
Immunohistochemical analysis of paraffin-embedded human placenta tissue slide using KHC2112 (SEC22B IHC Kit).



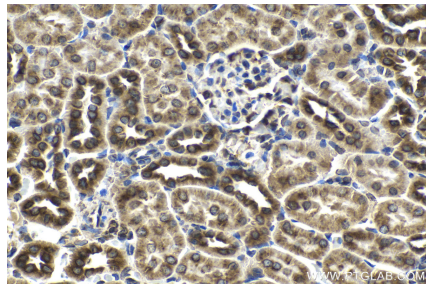
Immunohistochemical analysis of paraffin-embedded mouse liver tissue slide using KHC2112 (SEC22B IHC Kit).



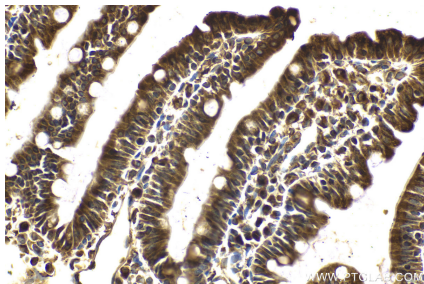
Immunohistochemical analysis of paraffin-embedded mouse kidney tissue slide using KHC2112 (SEC22B IHC Kit).



Immunohistochemical analysis of paraffin-embedded mouse intestine tissue slide using KHC2112 (SEC22B IHC Kit).



Immunohistochemical analysis of paraffin-embedded rat kidney tissue slide using KHC2112 (SEC22B IHC Kit).



Immunohistochemical analysis of paraffin-embedded rat small intestine tissue slide using KHC2112 (SEC22B IHC Kit).