

IHC*easy* PPFIA3 Ready-To-Use IHC Kit

Catalog Number: **KHC2107**

General Information

Sample type:
FFPE tissue
Cited sample type:
Reactivity:
Human
Cited Reactivity:

Assay type:
Immunohistochemistry
Primary antibody type:
Rabbit Polyclonal
Secondary antibody type:
Polymer-HRP-Goat anti-Rabbit

Kit Component

Component	Size	Concentration
Antigen Retrieval Buffer	100 mL	50×
Washing Buffer	100 mL ×2	20×
Blocking Buffer	5 mL	RTU
Primary Antibody	5 mL	RTU
Secondary Antibody	5 mL	RTU
Chromogen Component A	0.2 mL	RTU
Chromogen Component B	4 mL	RTU
Signal Enhancer	5 mL	RTU
Counter Staining Reagent	5 mL	RTU
Mounting Media	5 mL	RTU
Control Slide	1 slide (Optional)	FFPE
Datasheet	1 Copy	
Manual	1 Copy	

Storage Instructions

All the reagents are stored at 2-8°C. The kit is stable for 6 months from the date of receipt.

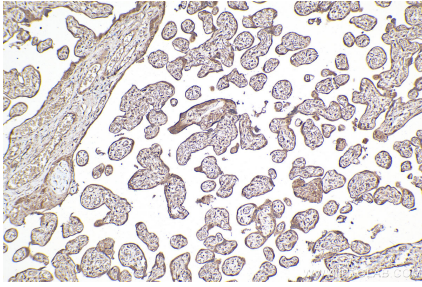
Background

PPFIA3, also named as KIAA0654, belongs to the liprin family and Liprin-alpha subfamily. PPFIA3 may regulate the disassembly of focal adhesions. It may localize receptor-like tyrosine phosphatases type 2A at specific sites on the plasma membrane, possibly regulating their interaction with the extracellular environment and their association with substrates. PPFIA3 exhibits more than 5 fold accumulations in the monoribosome fraction. PPFIA3 is decreased at the protein level by the miR-99 family but not in the luciferase reporter with the 3'UTR of PPFIA3.

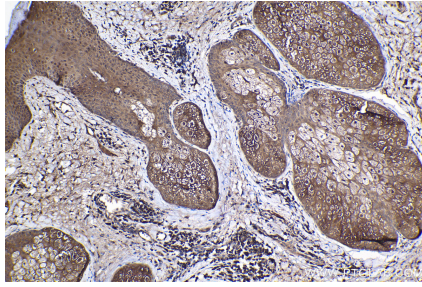
Synonyms

KIAA0654, Liprin alpha 3, LPNA3, PPFIA3

Selected Validation Data



Immunohistochemical analysis of paraffin-embedded human placenta tissue slide using KHC2107 (PPFIA3 IHC Kit).



Immunohistochemical analysis of paraffin-embedded human skin cancer tissue slide using KHC2107 (PPFIA3 IHC Kit).