

# IHC*easy* PDE8A Ready-To-Use IHC Kit

Catalog Number: **KHC2101**

## General Information

Sample type:  
FFPE tissue  
Cited sample type:  
Reactivity:  
Human, Mouse, Rat  
Cited Reactivity:

Assay type:  
Immunohistochemistry  
Primary antibody type:  
Rabbit Polyclonal  
Secondary antibody type:  
Polymer-HRP-Goat anti-Rabbit

## Kit Component

Component	Size	Concentration
Antigen Retrieval Buffer	100 mL	50×
Washing Buffer	100 mL ×2	20×
Blocking Buffer	5 mL	RTU
Primary Antibody	5 mL	RTU
Secondary Antibody	5 mL	RTU
Chromogen Component A	0.2 mL	RTU
Chromogen Component B	4 mL	RTU
Signal Enhancer	5 mL	RTU
Counter Staining Reagent	5 mL	RTU
Mounting Media	5 mL	RTU
Control Slide	1 slide (Optional)	FFPE
Datasheet	1 Copy	
Manual	1 Copy	

## Storage Instructions

All the reagents are stored at 2-8°C. The kit is stable for 6 months from the date of receipt.

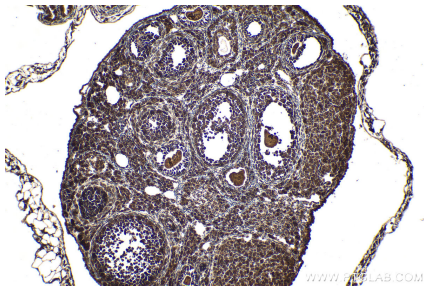
## Background

PDE8A (high affinity cAMP-specific and IBMX-insensitive 3',5'-cyclic phosphodiesterase 8A) belongs to the cyclic nucleotide phosphodiesterase family and PDE8 subfamily. PDE8A plays a critical role in the modulation of at least one compartment of cAMP and hence PKA activity during  $\beta$ -adrenergic receptor ( $\beta$  AR) activation in ventricular myocytes. The full length protein contains several sites for protein phosphorylation, N-glycosylation, N-myristoylation, and amidation.

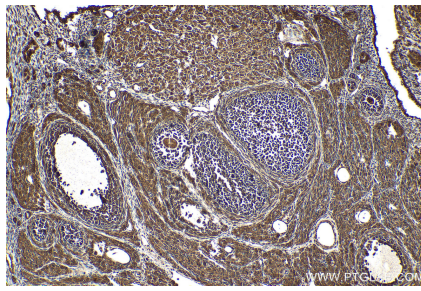
## Synonyms

HsT19550, High affinity cAMP-specific and IBMX-insensitive 3',5'-cyclic phosphodiesterase 8A, EC:3.1.4.53

## Selected Validation Data



Immunohistochemical analysis of paraffin-embedded mouse ovary tissue slide using KHC2101 (PDE8A IHC Kit).



Immunohistochemical analysis of paraffin-embedded rat ovary tissue slide using KHC2101 (PDE8A IHC Kit).