

IHC*easy* SIAH2 Ready-To-Use IHC Kit

Catalog Number: **KHC2076**

General Information

Sample type:
FFPE tissue
Cited sample type:
Reactivity:
Human, Mouse, Rat
Cited Reactivity:

Assay type:
Immunohistochemistry
Primary antibody type:
Rabbit Polyclonal
Secondary antibody type:
Polymer-HRP-Goat anti-Rabbit

Kit Component

Component	Size	Concentration
Antigen Retrieval Buffer	100 mL	50×
Washing Buffer	100 mL ×2	20×
Blocking Buffer	5 mL	RTU
Primary Antibody	5 mL	RTU
Secondary Antibody	5 mL	RTU
Chromogen Component A	0.2 mL	RTU
Chromogen Component B	4 mL	RTU
Signal Enhancer	5 mL	RTU
Counter Staining Reagent	5 mL	RTU
Mounting Media	5 mL	RTU
Control Slide	1 slide (Optional)	FFPE
Datasheet	1 Copy	
Manual	1 Copy	

Storage Instructions

All the reagents are stored at 2-8°C. The kit is stable for 6 months from the date of receipt.

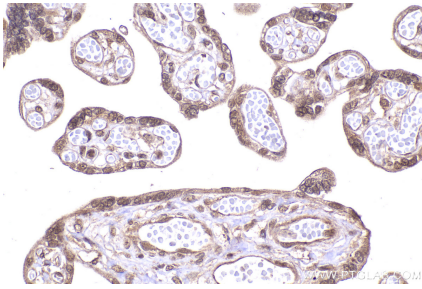
Background

The mammalian Seven-in-absentia homolog 2 (SIAH2), is a RING finger type ubiquitin ligase with a catalytic RING domain on its N-terminus, followed by two zinc fingers and a C-terminal substrate binding domain. Siah is a mammalian homolog of Sina, a Drosophila protein functioning in eye development. Mammals express two isoforms, Siah1 and 2, and mice exhibit two Siah1 isotypes, 1a and 1b. SIAH2 indirectly regulates the level of HIF-1 α by promoting degradation of PHDs by UPS. SIAH2, in turn, is positively regulated by hypoxia-dependent transcriptional and posttranscriptional mechanisms.

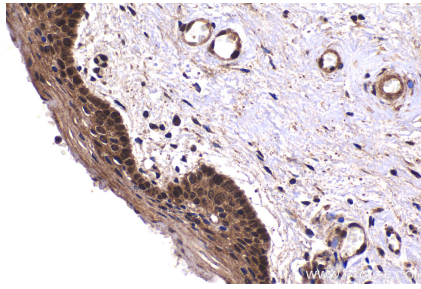
Synonyms

Siah 2, RING-type E3 ubiquitin transferase SIAH2, hSiah2, EC:2.3.2.27, E3 ubiquitin-protein ligase SIAH2

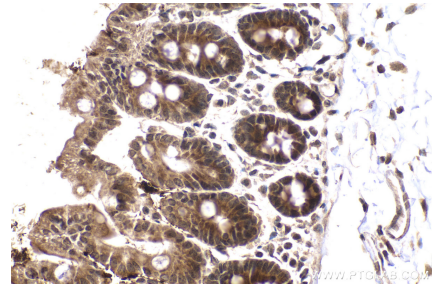
Selected Validation Data



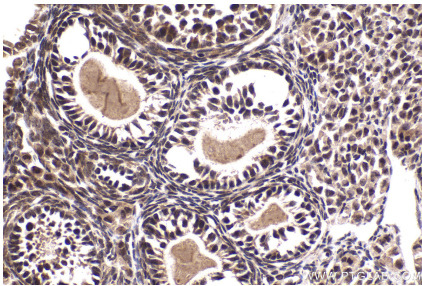
Immunohistochemical analysis of paraffin-embedded human placenta tissue slide using KHC2076 (SIAH2 IHC Kit).



Immunohistochemical analysis of paraffin-embedded human cervical cancer tissue slide using KHC2076 (SIAH2 IHC Kit).



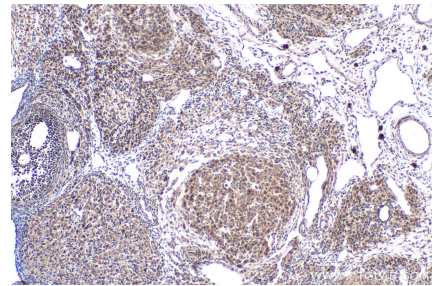
Immunohistochemical analysis of paraffin-embedded mouse intestine tissue slide using KHC2076 (SIAH2 IHC Kit).



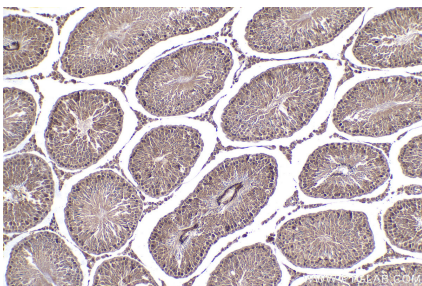
Immunohistochemical analysis of paraffin-embedded mouse ovary tissue slide using KHC2076 (SIAH2 IHC Kit).



Immunohistochemical analysis of paraffin-embedded rat small intestine tissue slide using KHC2076 (SIAH2 IHC Kit).



Immunohistochemical analysis of paraffin-embedded rat ovary tissue slide using KHC2076 (SIAH2 IHC Kit).



Immunohistochemical analysis of paraffin-embedded rat testis tissue slide using KHC2076 (SIAH2 IHC Kit).