

# IHC*easy* POLR3G Ready-To-Use IHC Kit

Catalog Number: **KHC2071**

## General Information

**Sample type:**  
FFPE tissue

**Cited sample type:**

**Reactivity:**  
Human, Mouse, Rat

**Cited Reactivity:**

**Assay type:**  
Immunohistochemistry

**Primary antibody type:**  
Rabbit Polyclonal

**Secondary antibody type:**  
Polymer-HRP-Goat anti-Rabbit

## Kit Component

Component	Size	Concentration
Antigen Retrieval Buffer	100 mL	50×
Washing Buffer	100 mL ×2	20×
Blocking Buffer	5 mL	RTU
Primary Antibody	5 mL	RTU
Secondary Antibody	5 mL	RTU
Chromogen Component A	0.2 mL	RTU
Chromogen Component B	4 mL	RTU
Signal Enhancer	5 mL	RTU
Counter Staining Reagent	5 mL	RTU
Mounting Media	5 mL	RTU
Control Slide	1 slide (Optional)	FFPE
Datasheet	1 Copy	
Manual	1 Copy	

## Storage Instructions

All the reagents are stored at 2-8°C. The kit is stable for 6 months from the date of receipt.

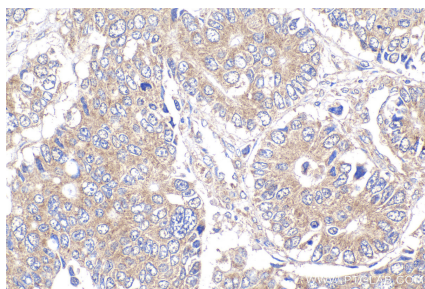
## Background

POLR3G also named as RNA polymerase III subunit C7 is a 223 amino acid protein, which belongs to eukaryotic RPC7 RNA polymerase subunit family. POLR3G localizes in the nucleus and is a component of the RNA polymerase III complex, which may be involved either in the recruitment and stabilization of the subcomplex within RNA polymerase III, or in stimulating catalytic functions of other subunits during initiation.

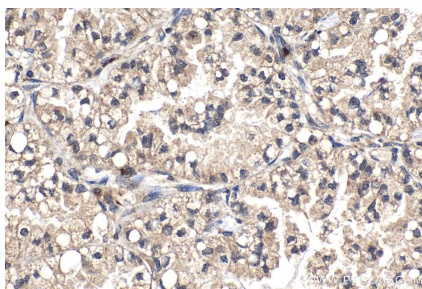
## Synonyms

POLR3G, RNA polymerase III subunit C7, RPC32, RPC7

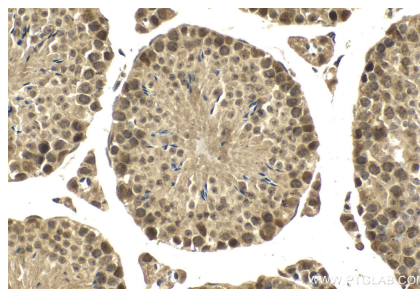
## Selected Validation Data



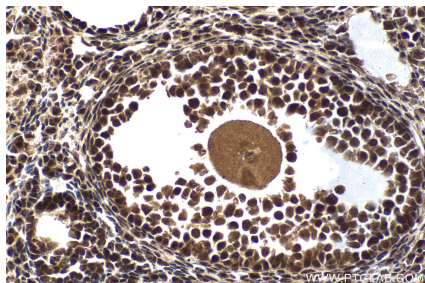
Immunohistochemical analysis of paraffin-embedded human stomach cancer tissue slide using KHC2071 (POLR3G IHC Kit).



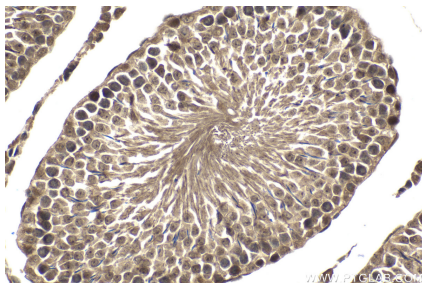
Immunohistochemical analysis of paraffin-embedded human lung cancer tissue slide using KHC2071 (POLR3G IHC Kit).



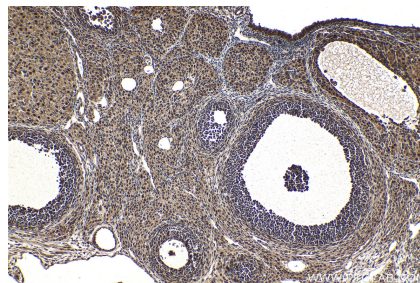
Immunohistochemical analysis of paraffin-embedded mouse testis tissue slide using KHC2071 (POLR3G IHC Kit).



Immunohistochemical analysis of paraffin-embedded mouse ovary tissue slide using KHC2071 (POLR3G IHC Kit).



Immunohistochemical analysis of paraffin-embedded rat testis tissue slide using KHC2071 (POLR3G IHC Kit).



Immunohistochemical analysis of paraffin-embedded rat ovary tissue slide using KHC2071 (POLR3G IHC Kit).