

IHC*easy* PPM1D Ready-To-Use IHC Kit

Catalog Number: **KHC2070**

General Information

Sample type:
FFPE tissue

Cited sample type:

Reactivity:
Human, Mouse, Rat

Cited Reactivity:

Assay type:
Immunohistochemistry

Primary antibody type:
Rabbit Polyclonal

Secondary antibody type:
Polymer-HRP-Goat anti-Rabbit

Kit Component

Component	Size	Concentration
Antigen Retrieval Buffer	100 mL	50×
Washing Buffer	100 mL ×2	20×
Blocking Buffer	5 mL	RTU
Primary Antibody	5 mL	RTU
Secondary Antibody	5 mL	RTU
Chromogen Component A	0.2 mL	RTU
Chromogen Component B	4 mL	RTU
Signal Enhancer	5 mL	RTU
Counter Staining Reagent	5 mL	RTU
Mounting Media	5 mL	RTU
Control Slide	1 slide (Optional)	FFPE
Datasheet	1 Copy	
Manual	1 Copy	

Storage Instructions

All the reagents are stored at 2-8°C. The kit is stable for 6 months from the date of receipt.

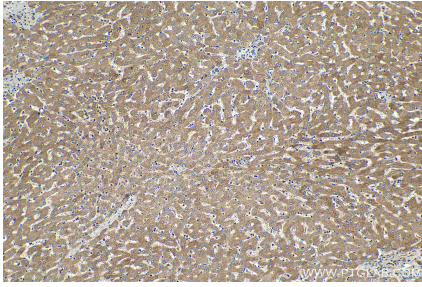
Background

PPM1D (also known as PP2Cd and WIP1) is a member of the PPM family, which is characterized by Mg²⁺/Mn²⁺-dependent activity and relative insensitivity to okadaic acid. The PPM1D gene is aberrantly amplified in a range of common cancers and encodes a protein phosphatase that is a potential therapeutic target.

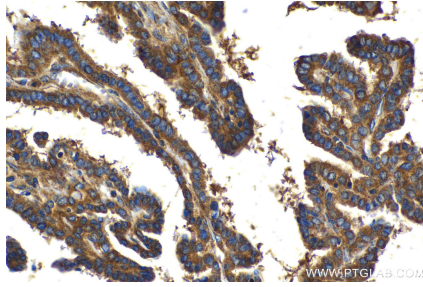
Synonyms

PP2C DELTA, PPM1D, Protein phosphatase 1D, WIP1

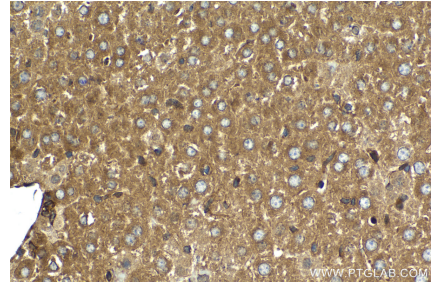
Selected Validation Data



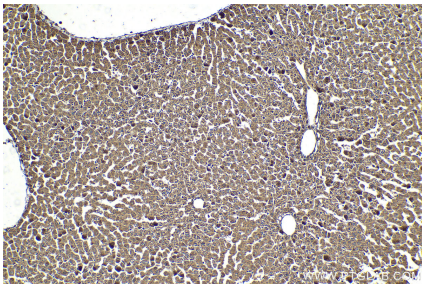
Immunohistochemical analysis of paraffin-embedded human liver tissue slide using KHC2070 (PPM1D IHC Kit).



Immunohistochemical analysis of paraffin-embedded human thyroid cancer tissue slide using KHC2070 (PPM1D IHC Kit).



Immunohistochemical analysis of paraffin-embedded mouse liver tissue slide using KHC2070 (PPM1D IHC Kit).



Immunohistochemical analysis of paraffin-embedded rat liver tissue slide using KHC2070 (PPM1D IHC Kit).