

IHC*easy* QSOX1/Quiescin Q6 Ready-To-Use IHC Kit

Catalog Number: **KHC2043**

General Information

Sample type:
FFPE tissue
Cited sample type:
Reactivity:
Human, Mouse, Rat
Cited Reactivity:

Assay type:
Immunohistochemistry
Primary antibody type:
Rabbit Polyclonal
Secondary antibody type:
Polymer-HRP-Goat anti-Rabbit

Kit Component

Component	Size	Concentration
Antigen Retrieval Buffer	100 mL	50×
Washing Buffer	100 mL ×2	20×
Blocking Buffer	5 mL	RTU
Primary Antibody	5 mL	RTU
Secondary Antibody	5 mL	RTU
Chromogen Component A	0.2 mL	RTU
Chromogen Component B	4 mL	RTU
Signal Enhancer	5 mL	RTU
Counter Staining Reagent	5 mL	RTU
Mounting Media	5 mL	RTU
Control Slide	1 slide (Optional)	FFPE
Datasheet	1 Copy	
Manual	1 Copy	

Storage Instructions

All the reagents are stored at 2-8°C. The kit is stable for 6 months from the date of receipt.

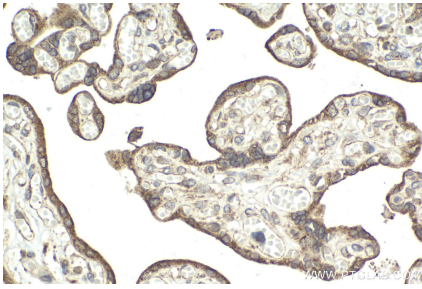
Background

QSOX1(Sulfhydryl oxidase 1) catalyzes the oxidation of sulfhydryl groups in peptide and protein thiols to disulfides with the reduction of oxygen to hydrogen peroxide. Isoform 1 is expressed on golgi apparatus membrane and isoform 2 is secreted. QSOX1/Quiescin Q6 is highly expressed in tumor cell lines but is not expressed in adjacent normal cells.

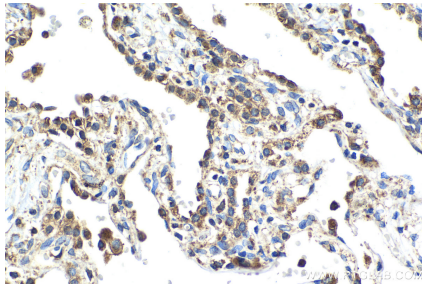
Synonyms

QSOX1, UNQ2520/PRO6013, QSCN6, Q6, hQSOX

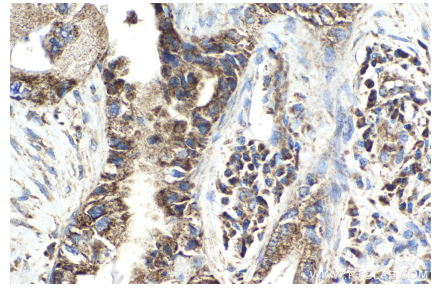
Selected Validation Data



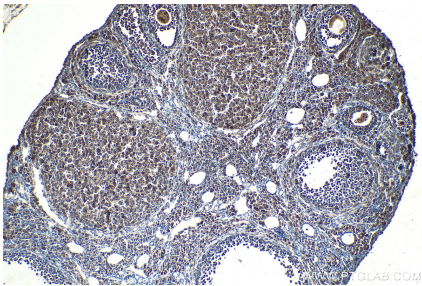
Immunohistochemical analysis of paraffin-embedded human placenta tissue slide using KHC2043 (QSOX1/Quiescin Q6 IHC Kit).



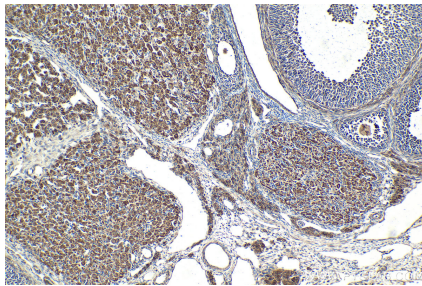
Immunohistochemical analysis of paraffin-embedded human lung tissue slide using KHC2043 (QSOX1/Quiescin Q6 IHC Kit).



Immunohistochemical analysis of paraffin-embedded human pancreas cancer tissue slide using KHC2043 (QSOX1/Quiescin Q6 IHC Kit).



Immunohistochemical analysis of paraffin-embedded mouse ovary tissue slide using KHC2043 (QSOX1/Quiescin Q6 IHC Kit).



Immunohistochemical analysis of paraffin-embedded rat ovary tissue slide using KHC2043 (QSOX1/Quiescin Q6 IHC Kit).