

IHC*easy* TMEM8B/NGX6 Ready-To-Use IHC Kit

Catalog Number: **KHC2039**

General Information

Sample type:
FFPE tissue

Cited sample type:

Reactivity:
Human, Mouse, Rat

Cited Reactivity:

Assay type:
Immunohistochemistry

Primary antibody type:
Rabbit Polyclonal

Secondary antibody type:
Polymer-HRP-Goat anti-Rabbit

Kit Component

Component	Size	Concentration
Antigen Retrieval Buffer	100 mL	50×
Washing Buffer	100 mL ×2	20×
Blocking Buffer	5 mL	RTU
Primary Antibody	5 mL	RTU
Secondary Antibody	5 mL	RTU
Chromogen Component A	0.2 mL	RTU
Chromogen Component B	4 mL	RTU
Signal Enhancer	5 mL	RTU
Counter Staining Reagent	5 mL	RTU
Mounting Media	5 mL	RTU
Control Slide	1 slide (Optional)	FFPE
Datasheet	1 Copy	
Manual	1 Copy	

Storage Instructions

All the reagents are stored at 2-8°C. The kit is stable for 6 months from the date of receipt.

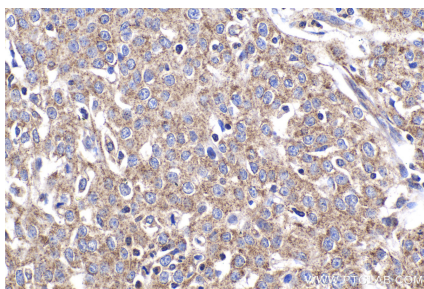
Background

NGX6 (also known as TMEM8B or C9orf127) is a transmembrane protein containing an epidermal growth factor (EGF)-like domain. It may function as a regulator of the EGFR pathway. NGX6 has been reported as a tumor suppressor which may function in cell growth, proliferation and adhesion.

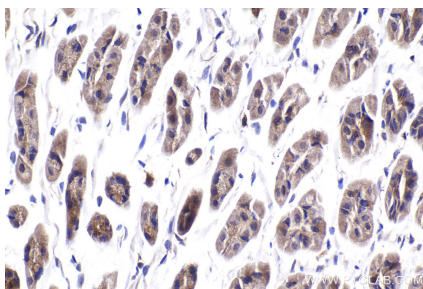
Synonyms

C9orf127, NAG 5, NGX6, Protein NAG 5, Protein NGX6, RP11 112J3.10, TMEM8B, Transmembrane protein 8B

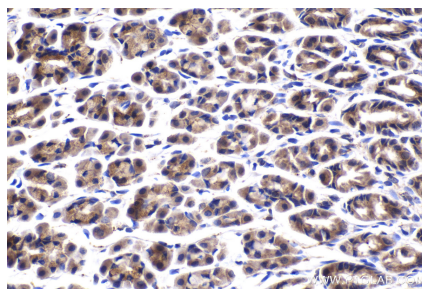
Selected Validation Data



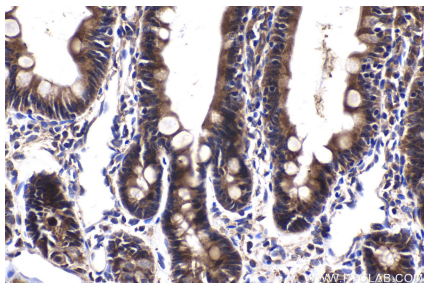
Immunohistochemical analysis of paraffin-embedded human cervical cancer tissue slide using KHC2039 (TMEM8B/NGX6 IHC Kit).



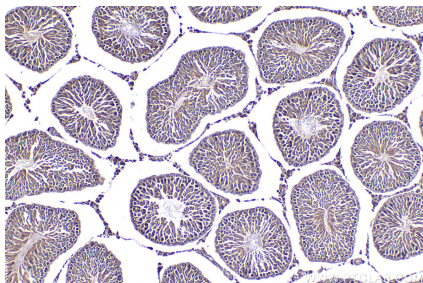
Immunohistochemical analysis of paraffin-embedded mouse stomach tissue slide using KHC2039 (TMEM8B/NGX6 IHC Kit).



Immunohistochemical analysis of paraffin-embedded rat stomach tissue slide using KHC2039 (TMEM8B/NGX6 IHC Kit).



Immunohistochemical analysis of paraffin-embedded rat small intestine tissue slide using KHC2039 (TMEM8B/NGX6 IHC Kit).



Immunohistochemical analysis of paraffin-embedded rat testis tissue slide using KHC2039 (TMEM8B/NGX6 IHC Kit).