

IHC*easy* PIN4 Ready-To-Use IHC Kit

Catalog Number: **KHC2012**

General Information

Sample type:
FFPE tissue
Cited sample type:
Reactivity:
Human, Mouse, Rat
Cited Reactivity:

Assay type:
Immunohistochemistry
Primary antibody type:
Rabbit Polyclonal
Secondary antibody type:
Polymer-HRP-Goat anti-Rabbit

Kit Component

Component	Size	Concentration
Antigen Retrieval Buffer	100 mL	50×
Washing Buffer	100 mL ×2	20×
Blocking Buffer	5 mL	RTU
Primary Antibody	5 mL	RTU
Secondary Antibody	5 mL	RTU
Chromogen Component A	0.2 mL	RTU
Chromogen Component B	4 mL	RTU
Signal Enhancer	5 mL	RTU
Counter Staining Reagent	5 mL	RTU
Mounting Media	5 mL	RTU
Control Slide	1 slide (Optional)	FFPE
Datasheet	1 Copy	
Manual	1 Copy	

Storage Instructions

All the reagents are stored at 2-8°C. The kit is stable for 6 months from the date of receipt.

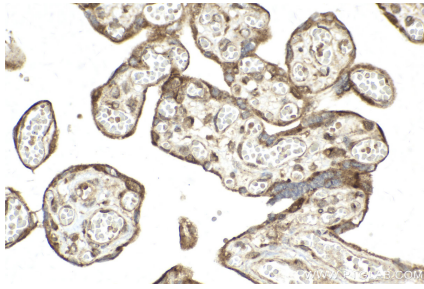
Background

PIN4, also known as EPVH, hPar14, is a member of the parvulin subfamily of the peptidyl-prolyl cis/trans isomerase protein family. PIN4 is the first eukaryotic member of the parvulin family of PPIases and contains a PPIase domain preceded by a 40-amino acid glycine- and lysine-rich N-terminal sequence.

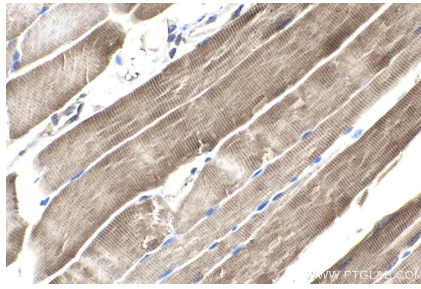
Synonyms

EPVH, hEPVH, hPar14, hPar17, PAR14, PAR17, Parvulin 14, Parvulin 17, PIN4, PPIase Pin4, Rotamase Pin4

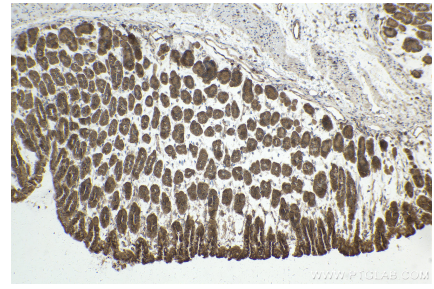
Selected Validation Data



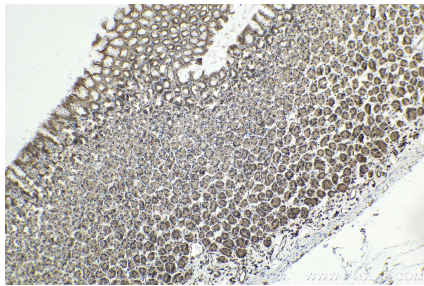
Immunohistochemical analysis of paraffin-embedded human placenta tissue slide using KHC2012 (PIN4 IHC Kit).



Immunohistochemical analysis of paraffin-embedded mouse skeletal muscle tissue slide using KHC2012 (PIN4 IHC Kit).



Immunohistochemical analysis of paraffin-embedded mouse stomach tissue slide using KHC2012 (PIN4 IHC Kit).



Immunohistochemical analysis of paraffin-embedded rat stomach tissue slide using KHC2012 (PIN4 IHC Kit).