

IHCeasy[®] RUVBL2 Ready-To-Use IHC Kit

Catalog Number: **KHC2011**

General Information

Sample type:
FFPE tissue
Cited sample type:
Reactivity:
Human, Mouse, Rat
Cited Reactivity:

Assay type:
Immunohistochemistry
Primary antibody type:
Mouse Monoclonal
Secondary antibody type:
Polymer-HRP-Goat anti-Mouse

Kit Component

Component	Size	Concentration
Antigen Retrieval Buffer	100 mL	50×
Washing Buffer	100 mL ×2	20×
Blocking Buffer	5 mL	RTU
Primary Antibody	5 mL	RTU
Secondary Antibody	5 mL	RTU
Chromogen Component A	0.2 mL	RTU
Chromogen Component B	4 mL	RTU
Signal Enhancer	5 mL	RTU
Counter Staining Reagent	5 mL	RTU
Mounting Media	5 mL	RTU
Control Slide	1 slide (Optional)	FFPE
Datasheet	1 Copy	
Manual	1 Copy	

Storage Instructions

All the reagents are stored at 2-8°C. The kit is stable for 6 months from the date of receipt.

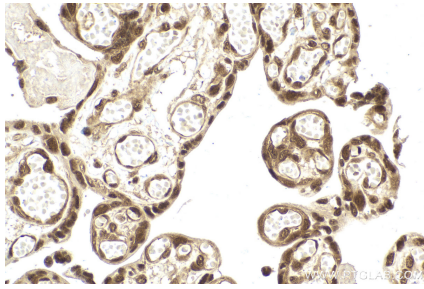
Background

RUVBL2 belongs to the conserved ATPases associated with various cellular activities (AAA+) protein subfamily, which is characterized by the presence of conserved Walker A and B motifs that are involved in ATP binding and hydrolysis. The AAA+ (ATPases associated with diverse cellular activities) ATPases, RUVBL1 and RUVBL2, were originally isolated as components of transcriptional complexes and shown to function in a number of different cellular processes, including transcriptional regulation, chromatin remodelling and DNA damage responses.

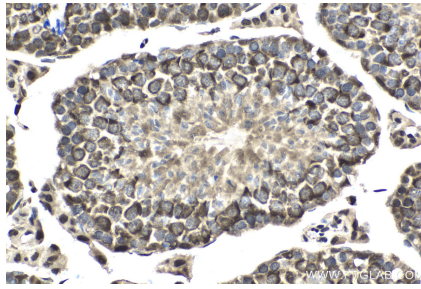
Synonyms

48 kDa TBP interacting protein, CGI 46, ECP 51, ECP51, INO80 complex subunit J, INO80J, Repressing pontin 52, REPTIN, Reptin 52, RuvB like 2, RuvB like 2 (E. coli), RUVBL2, RVB2, TAP54 beta, TIH2, TIP48, TIP49B

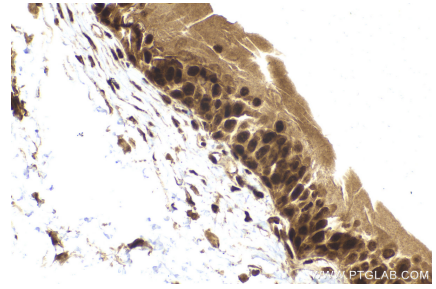
Selected Validation Data



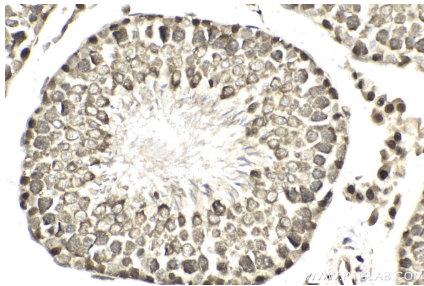
Immunohistochemical analysis of paraffin-embedded human placenta tissue slide using KHC2011 (RUVBL2 IHC Kit).



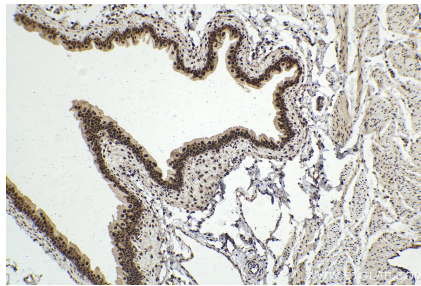
Immunohistochemical analysis of paraffin-embedded mouse testis tissue slide using KHC2011 (RUVBL2 IHC Kit).



Immunohistochemical analysis of paraffin-embedded mouse bladder tissue slide using KHC2011 (RUVBL2 IHC Kit).



Immunohistochemical analysis of paraffin-embedded rat testis tissue slide using KHC2011 (RUVBL2 IHC Kit).



Immunohistochemical analysis of paraffin-embedded rat bladder tissue slide using KHC2011 (RUVBL2 IHC Kit).