

# IHC*easy* STUB1 Ready-To-Use IHC Kit

Catalog Number: **KHC2003**

## General Information

Sample type:  
FFPE tissue  
Cited sample type:  
Reactivity:  
Human, Mouse, Rat  
Cited Reactivity:

Assay type:  
Immunohistochemistry  
Primary antibody type:  
Rabbit Polyclonal  
Secondary antibody type:  
Polymer-HRP-Goat anti-Rabbit

## Kit Component

Component	Size	Concentration
Antigen Retrieval Buffer	100 mL	50×
Washing Buffer	100 mL ×2	20×
Blocking Buffer	5 mL	RTU
Primary Antibody	5 mL	RTU
Secondary Antibody	5 mL	RTU
Chromogen Component A	0.2 mL	RTU
Chromogen Component B	4 mL	RTU
Signal Enhancer	5 mL	RTU
Counter Staining Reagent	5 mL	RTU
Mounting Media	5 mL	RTU
Control Slide	1 slide (Optional)	FFPE
Datasheet	1 Copy	
Manual	1 Copy	

## Storage Instructions

All the reagents are stored at 2-8°C. The kit is stable for 6 months from the date of receipt.

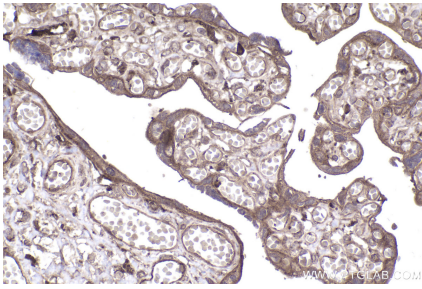
## Background

STIP1 Homology and U-Box Containing Protein 1 (STUB1), formerly known as CHIP (C-terminus of HSP70-Interacting Protein), is a chaperone-dependent E3 ubiquitin ligase. STUB1 is highly conserved across species and is expressed in most tissues.

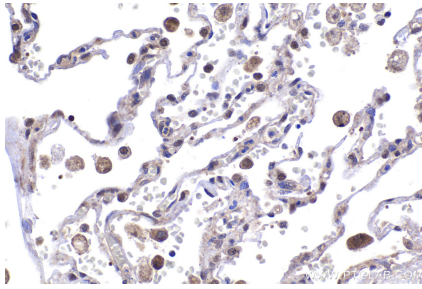
## Synonyms

Antigen NY CO 7, CHIP, CLL associated antigen KW 8, HSPABP2, NY CO 7, SDCCAG7, STUB1, UBOX1

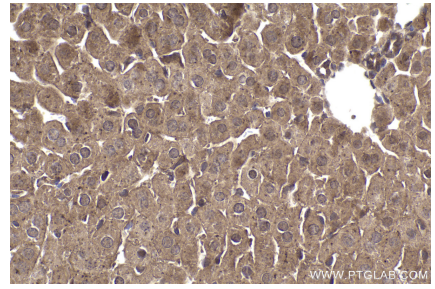
## Selected Validation Data



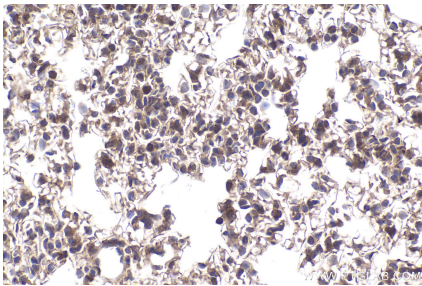
Immunohistochemical analysis of paraffin-embedded human placenta tissue slide using KHC2003 (STUB1 IHC Kit).



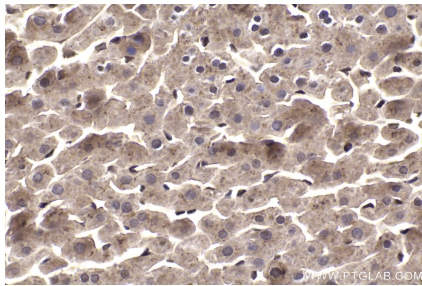
Immunohistochemical analysis of paraffin-embedded human lung tissue slide using KHC2003 (STUB1 IHC Kit).



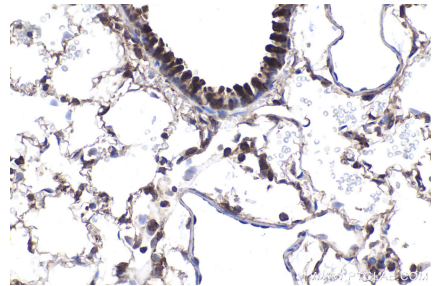
Immunohistochemical analysis of paraffin-embedded mouse liver tissue slide using KHC2003 (STUB1 IHC Kit).



Immunohistochemical analysis of paraffin-embedded mouse lung tissue slide using KHC2003 (STUB1 IHC Kit).



Immunohistochemical analysis of paraffin-embedded rat liver tissue slide using KHC2003 (STUB1 IHC Kit).



Immunohistochemical analysis of paraffin-embedded rat lung tissue slide using KHC2003 (STUB1 IHC Kit).